

**EDMON HILL, JR.**, South Cameron High School student, was one of 125 students elected to attend the National Leadership Camp at Lake Tahoe, Nevada July 9-14. The National Leadership Camps are five and a half day workshops for student leaders designed to increase their self-understanding and confidence; foster development of sound philosophy of leadership; and increase their skills in communication, problem-solving, group process, and organization.

## Commodities to be given

The Cameron Community Action Agency will distribute regular commodities as follows:

Cameron, Creole, and Grand Chenier areas - July 26, 8 a.m. - 4 p.m., Cameron Council on Aging Office, Cameron.

Grand Lake & Sweetlake areas - July 25, 9 a.m. - 12 noon, Grand Lake Multipurpose Building, Grand Lake.

Hackberry area - July 25, 9 a.m. - 12 noon, Hackberry Community Center, Hackberry.

Holly Beach area - July 25, 9:30 - 10 a.m., Holy Trinity Catholic Church, Holly Beach.

Johnson Bayou area - July 25, 10:30 - 11:30 a.m., Johnson Bayou Fire Station, Johnson Bayou.

If you have any questions or want to apply for commodities, contact Darla at 775-5145 or Gail at 598-5158. Walk-ins are welcome.

## Senior food boxes told

The Cameron Community Action Agency will distribute food for seniors as follows:

Cameron, Creole, and Grand Chenier areas - July 19, 8 a.m. - 4 p.m., Cameron Council on Aging Office, Cameron.

Grand Lake & Sweetlake areas - July 18, 11 a.m. - 12 noon, Grand Lake Multipurpose Building, Grand Lake.

Hackberry area - July 18, 11 a.m. - 12 noon, Hackberry Community Center, Hackberry.

Holly Beach - July 18, 1:30 - 2 p.m., Holy Trinity Catholic Church, Holly Beach.

Johnson Bayou - July 18, 2:30 - 3 p.m., Johnson Bayou Recreation Center, Johnson Bayou.

If you have any questions or want to apply for Food for Seniors, contact Darla at 775-5145 or Gail at 598-5158.

## Blood drives are next week

LifeShare Blood Centers will conduct two blood drives in Cameron Parish next week.

On Saturday, July 27 a drive to replenish blood for Helen Theriot will be held at the Sacred Heart Life Center in Creole from 4 to 8:30 p.m.

On Sunday, July 28 a drive will be held at St. Eugene Catholic church in Grand Chenier from 10 a.m. to 12 noon.



**ELECTED AS new officers of the Cameron Council on Aging board of directors on July 11 were Carolyn Thibodeaux, center, chairman; Clifton Hebert, left, vice-chairman; and Theos Duhon, right, secretary. Tina Horn was elected as treasurer. The board approved holidays for the agency and nutrition site and agency bylaws. The next meeting will be in September.**

The Cameron Parish  
**Pilot**  
 July 18, 2002  
 Vol. 46-No. 29  
 Cameron, La. 70631  
 35¢

## Passage of proposition Sat. will lower taxes in Cameron district

It's not usual for property owners to get the chance to vote on a tax proposition that will actually lower their taxes, that is the opportunity offered to voters in Cameron Parish Water and Wastewater District No. 1 on Saturday, July 20.

On the ballot is a proposition to levy a collectable millage of 9.40 mill property tax for ten (10) years to "operate and maintain the district's water and wastewater systems." The district includes the town of Cameron and surrounding area and provides water and sewerage collection services for about 800 residential, 33 commercial, and 41 metered cus-

tomers.

The water district was created in 1963 and the sewer district in 1971. Up until 1990 two separate boards oversaw them. Although they shared the same office and employees. A legislative act combined the two boards in 1990 and in February the two districts were combined into one district.

If the tax proposition is approved on July 20, the districts taxes will be reduced from 13.40 mills to a collectable millage of 9.40 mills but the board intends to collect only 7 mills, nearly a 50 percent saving over the present tax. Homestead exemption

applies to this tax.

Also if the proposition passes, the board intends to reduce the present \$22.72 residential rate by \$1 and hopes to reduce it more in the future if possible.

Members of the water and sewer board are: J. C. Murphy, president, Bobby Doxey, vice-president, Ronald January, Chris Hebert, Vergy Hebert, Butch Willis, and Tammy Peshoff. Edward Petersen is the district's superintendent and Barbara Lou LeBlanc is the district's administrator.

The board is currently planning a \$500,000 renovation of the districts sewer pond located on the Jetty Road.

## Fundraiser held to aid H'berry team

A fund raiser was held Saturday July 13 at the recreation center in Hackberry. An Old Timers Game was played with the parents playing some of the 2002 High School baseball team in order to raise money for the HHS Baseball Program.

The Old Timers Team consisted of Terry Murphy, Jimmy Brown, Will Aucoin, Lee Buford, Kirk Stansel, Brian Beard, Dwayne Sanner, Gerald Miller, Kent Duhon, and Ronald Thomas.

The High School Team consisted of: Blake Murphy, Brian Brown, Jeffrey Moore, Nickalus Moore, Binky Buford, Layn Buford, Jake Buford, Brett Stansel, Wade LaBauve, Jay Sanner, and Anthony Miller.

The final score was the Young and the Restless (High School Team) overpowering the Old and the Wise (Old Timers) by the score of 11-4.

A basketball Old Timers game may be scheduled at a later date and will be posted in the Cameron Pilot.

## Senior citizens to be feted

The First Baptist Church of Cameron will sponsor a dinner for the senior citizens of Cameron Parish Sunday, July 28 at 4:30 p.m. at the church fellowship hall. All senior citizens are invited. If you have any questions call 775-5277 and leave a message.

## Basketball camp

A free basketball camp for children ages 5-14 will be held at the Johnson Bayou Recreation Center starting Thursday July 18 and continuing every Tuesday and Thursday. The schedule is as follows:

Ages 5 & 6 - 11 - 11:30 a.m.; 7 - 10, 11:30 - 12:30; 11 - 14, 12:30 - 1:30 p.m.

Kids may be dropped off, but must be picked up on time. Parents may stay. For more information call 569-2699.

## District changes are approved by judge

By GENEVA GRIFFITH

The Cameron Parish Police Jury set a new record for itself when a special called meeting lasted only four minutes.

The meeting had been called to adopt an ordinance approving changes in voting precincts as requested by the Cameron Parish School Board. After Asst. District Attorney Jennifer Jones explained the procedure, jurors approved asking District Judge Charles Quienalty to give the jury permission to make the changes.

Jury President Charles Precht then dismissed the meeting and the Jurors accompanied Ms. Jones to court, just 4 minutes later.

Judge Quienalty quizzed the Jury members on the request and approved it to be sent on to the Justice Department.

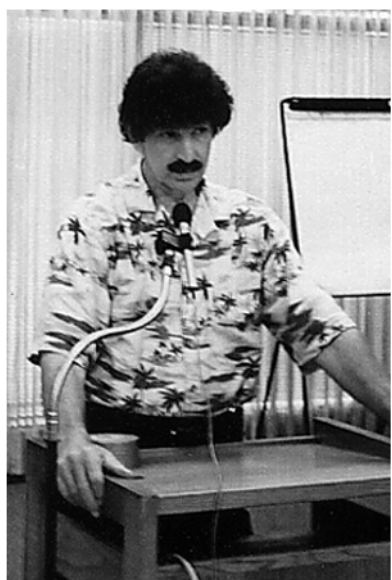
The law requires the Cameron Parish School board to reapportion its voting districts this year. On June 18, the school Board adopted a plan for reapportionment of its voting districts to provide for a 7 member board to replace the existing 6 member board.

On July 8, the School Board received and adopted a map setting forth the geographical boundaries for seven election districts.

The Voting Rights Act of 1973 provides that each school board member must represent the same number of people, as nearly as possible. In order to comply with the provisions, it is necessary for district boundaries to be changed.

Law provides that no precinct boundaries can be changed between Jan. 1, 1999 and Dec. 31, 2002, except by court order or changes do not dilute minority vote.

The earlier period for changing of precinct boundaries has expired, and if precinct boundaries are not changed until December 1, 2002, it will be unable to hold its regularly



**DONALD MENARD**, Rayne businessman who wrote two books about Hurricane Audrey, was a speaker at a hurricane conference held recently at the Lafayette Parish Library. He told the audience that conditions on June 27, 1957 caused Hurricane Audrey to change its course in the Gulf of Mexico, increase its speed, and take Louisiana by surprise, unprepared for its wrath.

scheduled elections, currently set for October 2002.

Steve Trahan, representing Hackberry, was the only Police Juror opposing the plan. He said meetings were held throughout the parish regarding reapportionment matter and his area did not approve.

He said that 216 people were taken out of Hackberry and put with the Johnson bayou area to make up the number of voters. Even though they have children in the Hackberry school and can see the school from their home, they were pulled out of their precinct and put in the Johnson Bayou district to make up the correct numbers.

Trahan's motion to not adopt precinct change was not acted on for lack of a second, Police Juror "Dusty" Sandifer made a motion to adopt the new precincts and the motion passed 5-1.

## Water goes over road at beach

A small disturbance caused heavy rains and water over Hwy. 82 west of Holly Beach Tuesday, according to Theos Duhon, Cameron Parish Sheriff's Dept.

He said the highway was not blocked and highway workers got the debris cleared off the road in short order.

He said the section of highway between Holly Beach and Constance Beach is subject to flooding and has been washed out by storms in the past.

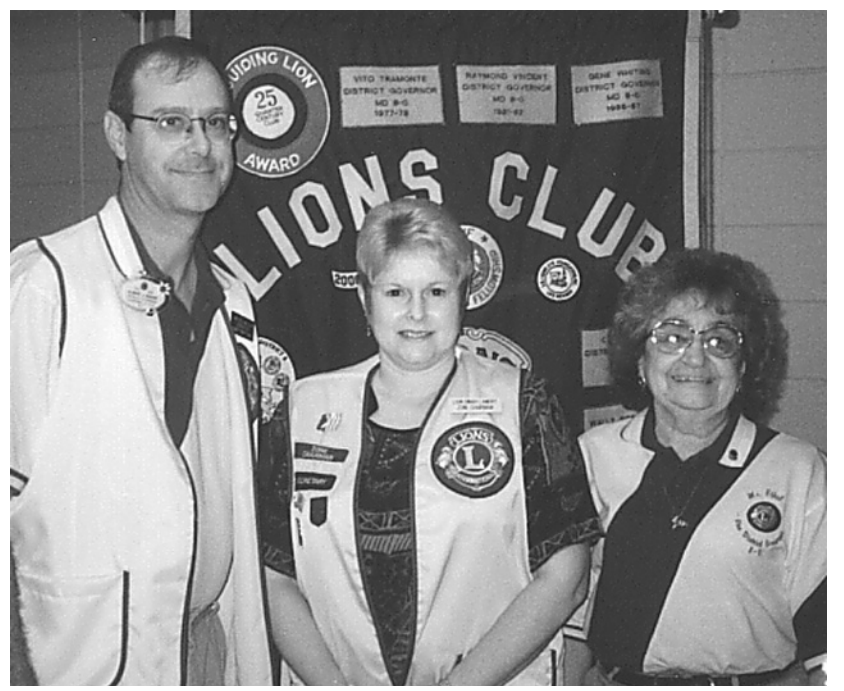
Rodney Guilbeaux, Constance Beach resident, said there was no damage there as far as he knew.

## Who's Who set Aug. 15

The Cameron Parish Pilot will publish its 2002 Who's Who edition on Aug. 15.

This special section will contain profiles of Who's Who in the parish, business, service, church, organizations and industry directory.

Persons wishing to reserve advertising space in this section are asked to contact Jeffra DeViney, advertising director, at 786-8004 or 1-800-256-7323. The deadline for ads is July 29.



**DINAH LANDRY** was named Lion of the Year for 2001 by the Cameron Lions Club at its recent annual installation meeting. Landry, center, is pictured with Lions District Gov. Bert Baker and incoming Dist. Gov. Ethel Robin.

## Dinah Landry named as Lion of the Year

The Cameron Lions Club held its annual installation meeting in June. New officers installed were:

Wilson Conner, president; Willie Daigle, vice president; Penelope Richard, vice president; JoDee Roberts, vice president; Dinah Landry, secretary; Tina Wolfe, treasurer; Alice Mason, Lion tamer; Greg Wicke, tail twister.

Past president Terry Hebert was honored for his leadership.

The Lion of the Year was given to Dinah B. Landry, club secretary. She becomes the first female Lion to earn this

honor in Cameron Parish.

The Cameron Lions Club meet each Wednesday at noon at the Outrigger Restaurant in Cameron. Visitors are welcome.

## Lightning sets Sabine wildfires

(American Press)

Sabine National Wildlife Refuge officials contained eight fires Friday night after lightning sparked several blazes in the marsh.

There were about 200 acres on fire as of 9 p.m. Friday. Wildlife Refuge officials planned to continue monitoring the fires and allow them to burn themselves out.

One fire was located on the north portion of Sabine Refuge, and the other seven were burning in the south section. At press time all fires were separate from each other.

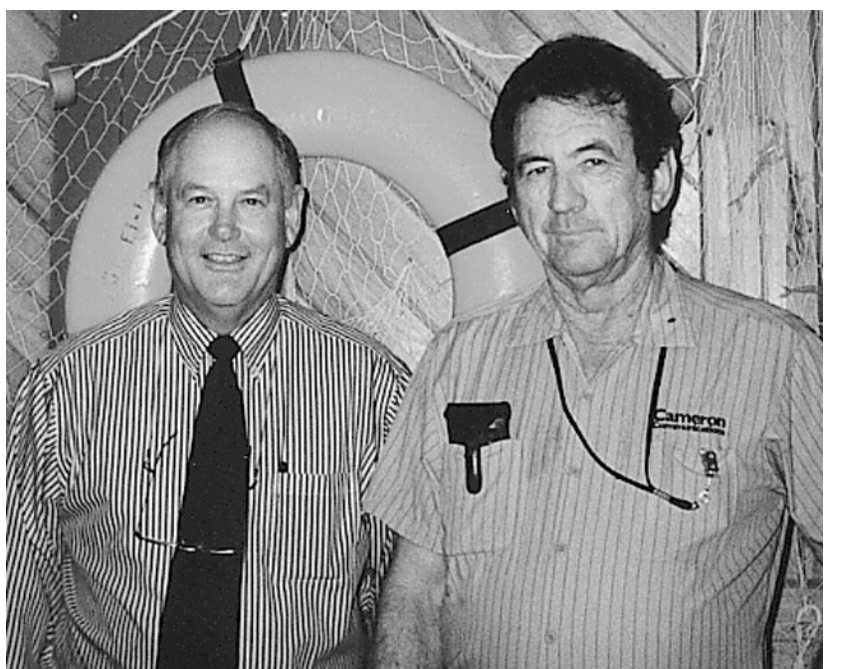
The fires were reported in Hackberry and Holly beach.

Cameron Parish Sheriff's Office officials said all eight of the fires were contained to the marsh area off La. 27 and weren't a threat to any structures.

Many local residents here, and some in Grand Lake and Lake Charles, reported seeing large clouds of black smoke lingering over the area at about 8 p.m.

As of 9 p.m., no volunteer fire departments were needed to assist the U. S. Wildlife and Fisheries personnel on scene.

Sabine Refuge contains 125,000 acres of protected marsh land.



**DISTRICT JUDGE Billy Ezell** of Lake Charles, who is a candidate for the Third Circuit Court of Appeals, was the speaker at the July 10 meeting of the Cameron Lions Club. Judge Ezell, left, is pictured with Wilson Conner, new Lions Club president. At the July 24 meeting of the Cameron Lions, District Gov. Ethel Robin will conduct a memorial ceremony for deceased members.



**DO YOU REMEMBER?** These were members of the Sweet Lake 4-H club in 1935-36. How many of these 'youngsters' do you recognize?

# FUNERALS

## MRS. DOROTHY H. HESSION

Funeral services for Mrs. Dorothy H. Hession, 83, were held at 10 a.m. Tuesday, July 16 in Odd Fellow Hall in Bayou LaBatre, Ala. Burial was in Odd Fellow Cemetery.

Mrs. Hession died Saturday, July 13, in the Sulphur hospital.

She was a native of St. Louis, Mo., and was a longtime resident of Bayou LaBatre. She had been living in Hackberry for the past two months with her family.

Survivors include one son, Marshall F. Spicer of Hackberry; one daughter, Dorothy Roper, Sulphur; one sister, Myrtle P. Brown, Florida; two brothers, Albert DeGeer and Elmer DeGeer, both of Coden, Ala.; five grandchildren; 14 great-grandchildren; and five great-great-grandchildren.

## MRS. ANNA L. ROY

Funeral services for Mrs. Anna L. Roy, 51, of Lake Arthur were held Monday, July 8 from Immaculate Conception Catholic Church. The Rev. Wayne LeBleu officiated. Burial was in Andrus Cove Cemetery.

She was a native of Creole and had lived in the Lake Arthur-Jennings area.

Survivors include her husband, Norman J. Roy of Lake Arthur; one son, Joe Roy, Jennings; one daughter, Lela R. Guidry, Lake Arthur; two sisters, Charlotte Bonsall and Delores Boudreaux, both of Creole; and two grandchildren.

# Cameron Library News

## NEW NOVELS

Joan Wolf, Silverbridge; Melissa Sanders-Self, All That Lives; Elizabeth Adler, Summer In Tuscany; M. C. Beaton, Agatha Raisin And The Day The Floods Came; Brenda Joyce, The Chase; Susan Elizabeth Phillips, Breathing Room; Kasey Michaels, Love To Love You Baby; Michael Lee West, Crazy Ladies; David Eddings, Regina's Song; The Star Wars Trilogy.

## MEMORIAL BOOKLIST

Memorial books in the Cameron Parish Library are listed as follows: with names of the ones in memory, donors, respectively:

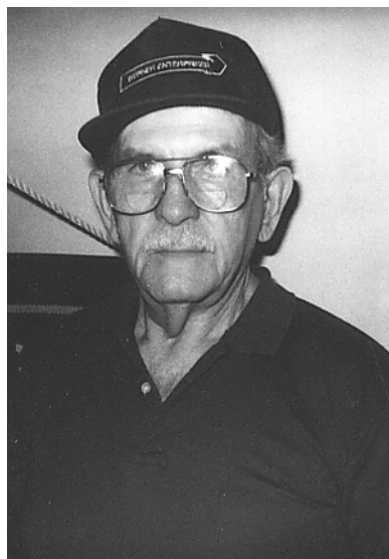
Rabbits, Bryan Morales by Wendell Murphy and Carolyn Thibodeaux; Joseph, Porta Welch by Your Cell Group Family; A March To Madness, Evans Darbonne by Hackberry Recreation Board;

Seashells By The Seashore, Annette "Mickey" Guilbeaux by Cameron Parish Library Director and Staff; Fishing Encyclopedia, Malcolm Lyle "Butch" Crain by Stockwell, Sievert, Vicellio, Clements & Shaddock;

Side By Side Leadership, Jimmy Derouen by Alvin, Ruby and Phyllis Murphy; Biblical Angels, Olive Castaine by Charlotte Trosclair and family; Praise & Worship, James "Jimbo" Fawvor by Charlotte Trosclair family; Old Shell New Shell, Mickey Guilbeaux by Charlotte Trosclair family; Can A Rooster Drive A Tractor? Albert Guidry by Angela and Bryant Guidry.



OUR LADY STAR of the Sea Knights of Columbus named Hayes Picou, Sr., left, Knight of the Month and Calvin Boudreaux and his wife Irene as Family of the Month.



OUR LADY Star of the Sea CYO was represented by Brett Billings, Hope Savoie, Jodi Billings, and Justin Theriot at a recent CYO conference called Steubenville South which was held in Alexandria.

## Johnson Bayou K. C. Council installs their new officers

When the Pavell Knights of Columbus Council 8323 met June 24 in Johnson Bayou, Tommy Pease was named Knight of the Month and Edmond and Alberta Trahan were named Family of the Month.

The next KC Bingo will be held on Sun., July 28 at 2 p.m. at the Renewal Center.

Tommy Pease obtained a riding mower and a vacuum cleaner for the Church of Assumption in Johnson Bayou with donations from Ikky Joe.

The K. of C. State convention was May 3 - 5 in Alexandria. Council 8323 received certificates of excellence in areas of church, community and membership. The Council had 758 points to place 68 out of 298 councils in the State of Louisiana.

The following officers were installed at the meeting: Grand Knight, Heath Jinks; Deputy Grand Knight, Edmond Trahan; Chancellor, Eric Lagneau; Recorder, Glenn Trahan; Treasurer, Ray Young; Advocate, Rev. Roland Vaughn; Warden, Farrell Blanchard; Trustees, Glenn Trahan, Sonny McGee, Edmond Trahan; Outside Guard, Ricky Romero; Inside Guard, Tim Trahan; Financial secretary, Gerald Touchet and Chaplain Rev. Roland Vaughn.

Starting July 1, the new District Deputy will be Jeff Hanchev of Sulphur.

Rev. Vaughn asked for help in providing a way to lock The Renewal Center and Church because of the recent fire in the church. Maurice Rivet volunteered to do so.

## Hackberry teams told

The following are the players on some of the Hackberry youth teams:

### SOFTBALL

Little Mustangs: Girls 8 yrs. old: Amanda Atwell; Amberlee Bacque; Belary Deville; Erica Duhon; Holley Landry; Joda Navarre; Lesley Sanner; Torie Stansel; Melissa Swier; Basby Thomas; Tracie Thomas; Coaches are Dwayne Sanner; Bobby Stansel and Gus Deville.

Dozers T-Ball Boys team: Brett Bird; Tate Buford; Vonallen Cormier; Jonathon Landry; Brent LeBleu; Forrest

Menard; Austin Temple; Gabe Thibodeaux; Bubba Thomas; William Toups; Mitchell Woods; Coaches are Lancey Buford; Jennifer Buford and Ferrall LeBleu.

Mighty Ducks, Girls T-Ball Team: Chelsie Benoit; Kourtlyn Fuselier; Meagan Johnson; Samantha Little; Marcie McChalko; Tiffany Richard; Jailyn Reed; Madison Shove; Destiny Simon; Blair Trahan; Jolie Trahan; Coaches are Blaine Johnson; Angie Little; Tim Little and George Shove.



The CAMERON PARISH PILOT  
USPS 086980  
Telephones: 786-8131 or 786-8004

Jerry and Joy Wise, Editors & Publishers; Jeffra Wise DeViney, Advertising Manager; Shirley Johnson, Production Manager; Wendi Burnett, News and Classifieds; Annette Brown, Bonnie Peloquin and Julie Fletcher, Staff Members

The Cameron Parish Pilot, P.O. Drawer 1486, Cameron, La. 70631-8998. Published Weekly. Entered as periodical mail at Cameron, Louisiana and Lake Charles, Louisiana Post Office, Periodical Postage paid.

POSTMASTER: Send address changes to: The Cameron Parish Pilot, P.O. Box 995, DeQuincy, La. 70633.

Subscription Rates: \$15.30 a year (tax included) in Cameron & Calcasieu Parishes; \$16.64 elsewhere in La., \$26.00 elsewhere in USA.

## Youth retreat set in L. Charles

A one-day youth retreat, "Behold the Lamb," will be held Aug. 10 from 9 a.m. to 10 p.m. at Burton Coliseum in Lake Charles by the Diocese of Lake Charles. The cost is \$25 per youth which includes supper and a T-shirt.

Persons wishing to attend should call Margaret Theriot by July 29. You do not need to be in a youth group to attend. Parents who would like to chaperone are invited to call.

They will be bringing in nationally recognized speakers from around the country, the talks will be totally up beat and totally Catholic, the music, praise, worship is going to be awesome, testimonies will be extremely moving and Adoration of the most Blessed Sacrament will be a life changing experience," Mrs. Theriot stated.

**Give the Gift With a Future**

Creating a New Century of Savings

**U.S. SAVINGS BONDS**

For complete information about U.S. Savings Bonds, visit our Web site at [www.savingsbonds.gov](http://www.savingsbonds.gov).

A public service of this newspaper

Come Join Us At:

**Fredman's of Creole**

Friday, July 19, 2002

9 p.m. - 12 a.m

**FOR KARAOKE**

370-3290

**JEFF DAVIS ELECTRIC CO-OP MEMBERS**

Just a note from me to say,  
Thanks for your support on election day.  
And to all our members it is my plan to be of service where I can.

This Cooperative belongs to you.  
I pledge to fulfill my duties, too.

*Robert "Buddy" Sarver*

Robert "Buddy" Sarver

Photo: for by Robert Sarver

BE A BLOOD DONOR

**WHO'S WHO**

**2002 EDITION**

Plan now to feature your Business, Industry Church or Service on **THUR., AUGUST 15, 2002**

The people of Cameron Parish we'd like you to meet... the people of Cameron, Creole, Grand Chenier, Hackberry, Holly Beach, Sweet Lake, Grand Lake and the surrounding area. This special magazine inserted into The Cameron Parish Pilot contains profiles of Who's Who in our local community as well as a Business, Service, Church, Organization & Industry Directory.

Call Jeffra DeViney, Advertising Director  
Deadline . . . Monday, July 29th  
The Cameron Parish Pilot  
203 Harrison St., P. O. Box 995, DeQuincy, LA 70633  
Call Today!!  
1-800-256-7323 or 786-8004

**FOR LEASE:**

Crain Brothers Inc. has the following for lease in Grand Chenier, La. On the Mermentau River with quick access to the Gulf of Mexico.

- 50 ft. x 170 ft. office/warehouse building.
- Approximately 300 ft of bulkhead along the Mermentau River with Approximately 14-18 ft of water in channel.

Also located on the property are the following:

- Hazard material staging area (fully contained, fenced with sump and spill containment area).
- Three helipads.
- Crew change area located on one end of the building.
- Several offices, kitchen, dining, and bathing facility.
- Two story building with offices located upstairs as well as down stairs. Several bunk rooms.
- City water, and electricity available, septic system installed, building is wired for generator package for backup if tenant would like to install emergency Generator.
- Ideal facility for Oilfield Production & Exploration Company.
- Facility formally housed by Phillips Petroleum Company.
- Additional crane service and or lease on equipment also available through Crain Brothers, Inc.

Please contact Clifton Hebert at . . .  
**(337)538-2411 or 1-800-737-2767** For Details

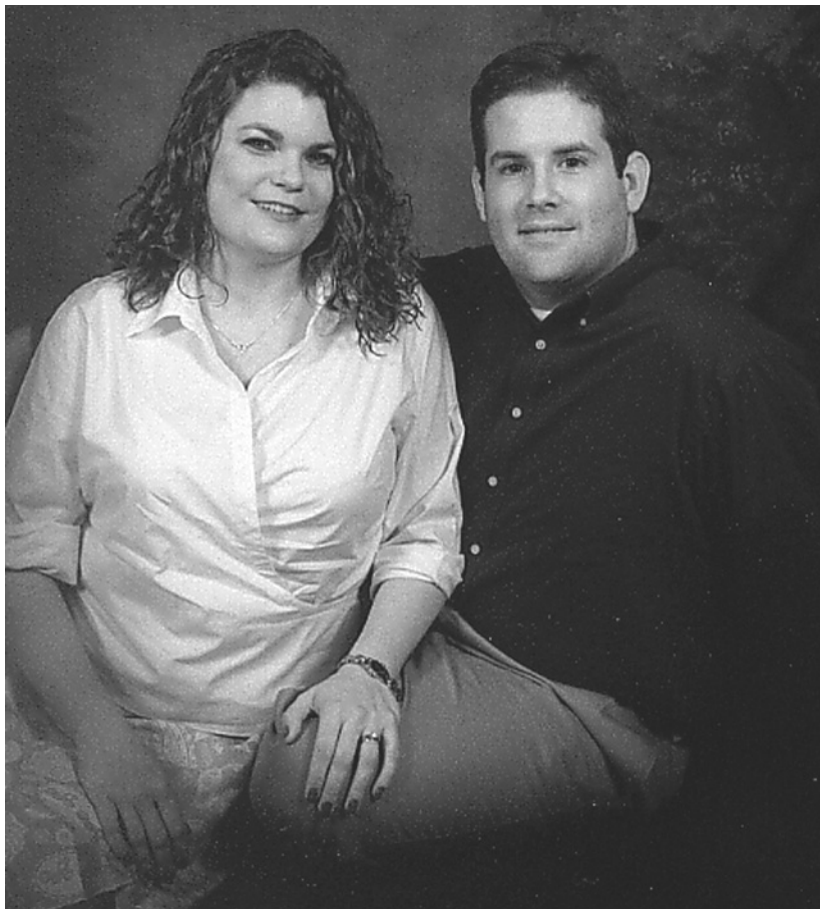
**CRAIN BROS INC.**

538-2411

24 HOUR SERVICE

# Hackberry News

By Grace Welch



MRS. MYLA JUNOD Dierking of Garland, Tex., announces the engagement and forthcoming marriage of her daughter, Kristin Alane Junod, to Casey Lee Vincent, son of Mr. and Mrs. Ernest L. Vincent of Grand Lake. The wedding is set for Saturday, July 27 at St. Mary of the Lake Catholic Church in Grand Lake at 7 p.m. A reception will follow in the church hall. Through this means, friends and relatives are invited to attend.

## Information is sought here on cancer cases

Dear Editor:  
Due to the large number of cancer cases in this area a cancer research project is continuing for Cameron Parish.

Anyone wishing to provide information for this much needed project can send your personal information to me. Please type or print all information.

The information needed is your name, year the cancer was diagnosed, type of cancer, if the patient is still living or year of death, and town in Cameron Parish patient is from, age cancer was diagnosed and age of patient now or at time of death, address and phone number.

After this information is gathered it will be sent on for further study.

Jessye Roux  
P. O. Box 824  
Cameron, LA 70631

the festival Aug. 2, 3 and 4. Three hour shifts are set up. Proceeds will go to construction of a new hall at St. Peters Church in Hackberry.

### APPOINTMENTS

Clifford Little and Jeff Alleman have been appointed by Bishop Braxton as church trustees.

Appointed to St. Peter's Cemetery Board by Father Roland Vaughn are Cindy Duhon, Donald Buford and Kirk Sanner.

Appointed to Finance Council for two years by Father Vaughn are Uretta Fraizer, Mike Devall, Clifford Little and Jeff Alleman.

Remember these youths of Agape Retreat in your prayers: Tobie Devall; Amanda Abshire; Brennan Duhon; Sean Vincent; Christopher Welch and Kendra Byler.

### GROUP RETREAT

a retreat for youths of Cameron Parish will be held Aug. 24 at the Hackberry Community Center. Contact Charlotte LaBoave at 762-3356 for information.

### BAPTIST CHURCH NEWS

The First Baptist Church of Hackberry will start Bible school Monday until Friday, July 22-26.



MR. AND MRS. Solomon Williams, Sr., of Cameron announce the engagement and forthcoming marriage of their daughter, Vanessa Maria Lute, to Melvin Cane, son of Mrs. Alberta Cane of Beaumont, Tex. The wedding is set for Saturday, July 27 at Ebenezer Baptist Church in Cameron at 3 p.m. Through this means, friends and relatives are invited to attend.

## Portie family reunion set

The Portie Family Reunion will be held Sunday, Aug. 4, at the PPG Family Center in Sulphur. Each family should bring a covered dish and cold drinks.

Bring any family mementos you would like to share. The books on the family history, "Reuniting The Portie Family, Volumes 1 and 2" will be available for purchasing.

For more information call Sweetpea Portie at 527-5599 or Judy Foy at 527-5775.



## Hackberry blood drive

The Hackberry Fire Department, will host a blood drive Saturday, July 20, from 10 a.m. to 2 p.m. The community is invited to donate. The drive will be staffed by LifeShare Blood Centers, the only supplier of blood to the nine area hospitals of Southwest Louisiana.

Donors may choose a total cholesterol screen or a colorful T-shirt as a gesture of appreciation. Donors are reminded that they should eat a good meal before donating. The total cholesterol check does not require fasting.

To be eligible, a donor must be in good health, be at least 17 years old and weigh a minimum of 110 pounds. A donor may give blood every eight weeks. Most medications will not prevent blood donation, acceptable medications include those taken to treat or control high blood pressure, diabetes, high cholesterol, depression, anxiety, and thyroid problems.

## Banana Smunchies

Smooch, spread, freeze, eat! Here's what you will need to make it:

- 1 ripe banana
- 1/3 cup of peanut butter
- graham crackers
- spoon
- small mixing bowl
- plastic wrap

Here's what you have to do:

1. Check with a grown-up before you start this.
2. Use a spoon to mash the banana with the peanut butter in a small mixing bowl.
3. Put a spoonful of the banana and peanut butter mixture onto half a graham cracker.
4. Cover with another graham cracker half so it looks like a sandwich.
5. Wrap your smunchies in plastic wrap and put them in the freezer for 3 hours.
6. Now they're ready to eat. They go great with a glass of milk.
7. Bon Appetit!



## Butane Gas

FOR HOMES BEYOND THE GAS MAINS

COOKING • WATER HEATING

REFRIGERATION  
FAST - CLEAN - ECONOMICAL  
FREEZERS AND  
AIR CONDITIONERS  
BUTANE GAS RANGES  
WATER HEATERS

**GAS APPLIANCE COMPANY**

1227 RYAN ST. - LAKE CHARLES  
PHONE: 439-4051



## Cameron Pilot Customer Services

Complete the appropriate section(s) below and mail entire coupon to: CAMERON PILOT, P.O. Box 995, DeQuincy, La. 70633-0995 Allow Two Weeks For Processing.

### Change of Address?

If You're Planning A Move, Please Attach Your Newspaper Label Here, Then Print Your Name and Address In The Box Below. Send Early To Ensure Continuous Service.

### Easy Renewal

To Renew Your Current Subscription, Please Check The Appropriate Box Below, Then Print Your Name and Address In The Box Below.

- Cameron & Calcasieu Parish .....\$16.30
- Elsewhere In Louisiana & Texas .....\$16.64
- Elsewhere In The United States .....\$26.00

### Want Advertising Info?

Please Check The Box Below and Print Your Name and Address In The Section Below.

- Yes. Please Send Me Advertising Rate Information.

### Name and Address

Be Sure To Complete This Section In Addition To Any of The Sections You've Filled In Above.

From:  
Name \_\_\_\_\_  
Address \_\_\_\_\_  
City \_\_\_\_\_ State \_\_\_\_\_ Zip \_\_\_\_\_

Don't Forget To Include Your Payment For Your Subscription.

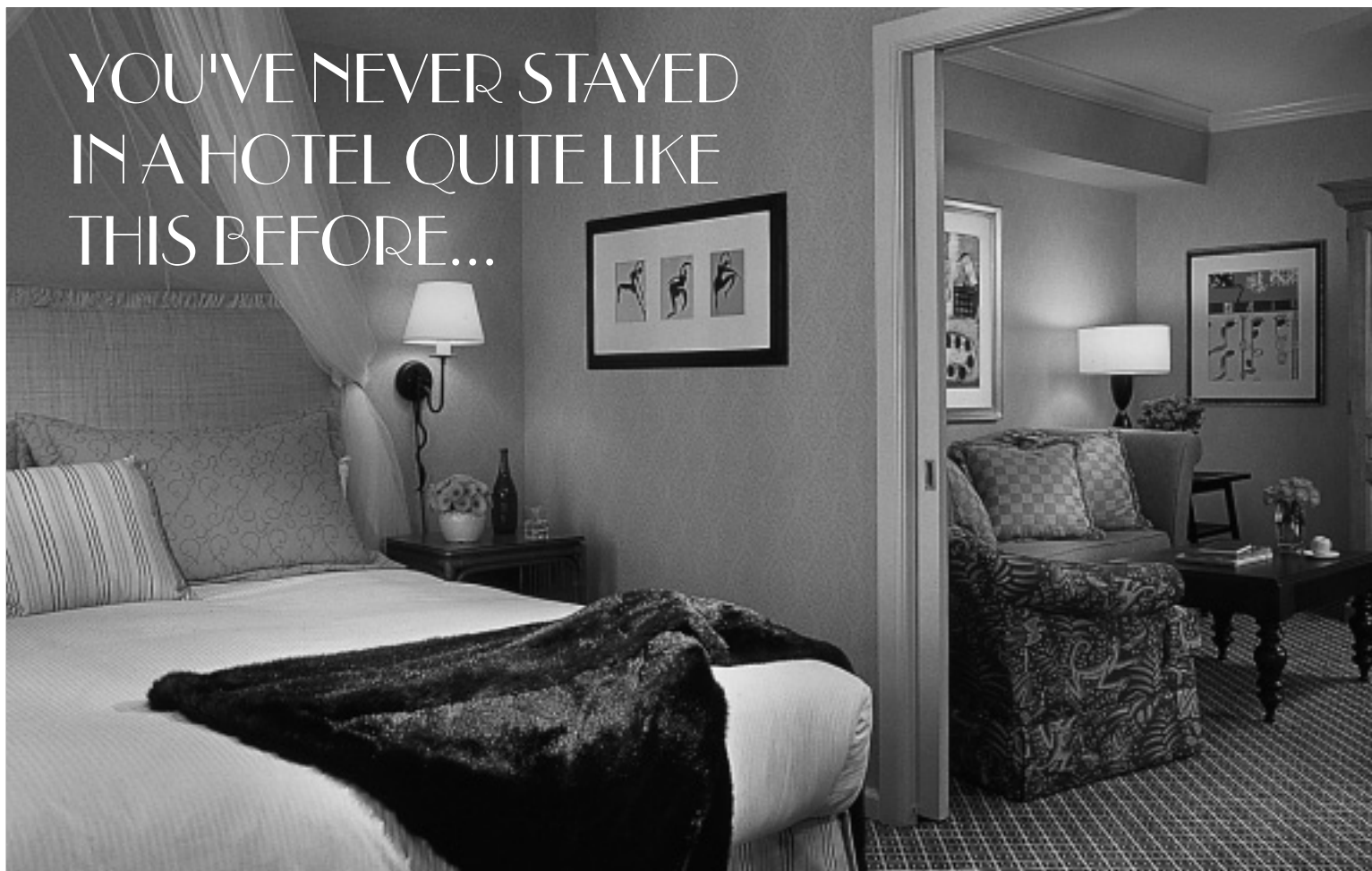
## Gift Idea

The Cameron Pilot Makes a Welcome Gift. And It's So Easy To Give. Simply Fill Out The Recipient's Name and Address Below, Then Print Your Name and Address In The Box Above.

- Subscription Rates:
- Cameron & Calcasieu Parish .....\$16.30
  - Elsewhere In Louisiana & Texas .....\$16.64
  - Elsewhere In The United States .....\$26.00

Name \_\_\_\_\_  
Address \_\_\_\_\_  
City \_\_\_\_\_ State \_\_\_\_\_ Zip \_\_\_\_\_

- Start My Own Subscription. (For More Than One Gift, Please Attach A Separate Sheet.)



YOU'VE NEVER STAYED IN A HOTEL QUITE LIKE THIS BEFORE...

SULTRY SUMMER SAVINGS... RATES STARTING AT \$89



ASK ABOUT OUR SUMMER FIN FEST PACKAGE!

- All 250 guest rooms, including 22 Suites and 20 Tall Rooms, have three-line phones, voicemail, data ports, mini bar, coffee maker, umbrella, robes, iron and ironing board and hair dryer
- Complimentary morning Starbucks coffee service
- Evening wine reception with chair massage daily
- Fitness room

- Complimentary 800 calls and credit card access
- Valet laundry
- Full Conference/Banquet facilities
- Chef Susan Spicers new restaurant, Cobalt, adjacent to hotel
- 24-hour room service

- Companion Goldfish upon request. Pet Friendly.
- Located in the Central Business District, on St. Charles Avenue. 3 blocks from world-famous French Quarter and Canal Street. 4 blocks from the Louisiana Superdome, New Orleans Arena, Harrah's Casino, the Mississippi River and the Convention Center.
- Street car stop in front of hotel

TOLL FREE 866.561.0010

333 St. Charles Avenue  
New Orleans, LA 70130

Fax: 504.561.0036  
Airline Access Code: KC



www.monaco-neworleans.com



## Do You Remember?

By Keith Hambrick

### Lake Charles American Press, July 17, 1939 SCHOOL BOARD AWARDS CONTRACT

The Cameron Parish School Board has awarded a contract to Alvin Dyson, contractor, for the construction of an addition to the office of the Creole School Building. I. C. Carter of Lake Charles is the architect for the project.

### CAMERON'S CORN AND COTTON

Cameron Parish's two major crops, corn and cotton, were reported Monday in excellent condition by Carroll H. McCall, parish agent.

With cotton acreage increased to an estimated 5,000 acres over 1938's approximate 4,000. Mr. McCall said the older corn was already made and that the last rainfall had been of invaluable help to the younger crop.

Maturing with the rest of Cameron's cotton is an experimental half-acre of "Sea Island cotton" being grown by John Cotton of the Louisiana Experiment station at Baton Rouge.

The half-acre is located on land belonging to the Mermentau Mineral Land Co. Several different types of Sea Island cotton are being grown in an effort to discover which will thrive best in Cameron, Mr.

McCall stated.

The experiment marks the first time in several years that any of this particular type of cotton has been grown in the coastal parish.

### Cameron Pilot, July 17, 1969 FARM BUREAU WINS

The Cameron Parish Farm Bureau won two awards at the annual convention of the Louisiana Farm Bureau Federation in New Orleans last week.

D. W. Griffith, Cameron Bureau president, accepted the second place plaque in the division of 14 parishes in the state for overall activities in all phases of Farm Bureau activity.

Cameron was also presented a silver engraved tray for being one of 14 parishes in the state achieving the insurance goal of over \$150,000 in life insurance.

Also representing the local Farm Bureau as a voting delegate was Alex Beard of Sweetlake, who is a vice president.

### CREOLE TEAM WINS

The "Creole Originals" slow-pitch softball team won first place at the Fourth of July softball tournament in Cameron. Team members were: Frances Aucoin, Pat Ortego, Sharon Theriot, Charlotte Guillory, Donna Miller, Bobbie Landry, Linda Dahlen, Charlotte

**DELEGATES FROM the Cameron Parish Chapter attending the regional NAACP Convention in Houston July 6-9 are pictured above. From left are: Margaret McArthur; Mrs. Sheryl Moses; Mrs. Louise Cole, chapter president; Ernest Johnson, Louisiana NAACP president; and Marion Keller, assistant treasurer.**

Dudleston, Carolyn Rutherford, Debbie Theriot, Mary Jane Miller, Ching Conner, and Phyllis Savoie. Robert Ortego was the coach.

### LEGION 176 OFFICERS

Jules Dronet was recently elected as Commander of the Richard Brothers American Legion Post 176, which held its first meeting in the partially-completed new Legion home.

Other officers are: 1st Vice Commander, J. P. Boudoin, Jr.; 2nd Vice Commander, Russell Richard; 3rd Vice Commander, Dewey LaBove; Adjutant, Ellis McWhirter; Chaplain, Roland U. Primeaux; Judge Advocate, Edison R. Mhire; Finance Officer, E. Nunez; Service Officer, E. J. Dronet; Publicity and Historian, K. H. Hopper; Sergeant-at-Arms, Odia "Jack" Duhon; Color Bearers, Phirma LeBoeuf and Elton Bonsall.

### PERMIT SOUGHT

Application for a Department of the Army permit to authorize channel dredging and jetty construction in the

Gulf of Mexico and the Lower Mud Lake has been made by the Board of Commission, East Cameron Port Harbor and Terminal District, Grand Chenier.

The work is to be located in the Gulf and the eastern portion of the lake, central to a point about 6.3 miles southeasterly from Oak Grove in Cameron Parish with the channel extending from the Mermentau River Channel southeasterly across the lake and into the Gulf.

The jetties are to be located in the Gulf about 1,000 feet apart and extending gulward about 1,400 feet from the mean low-water shoreline.

The work will consist of dredging a new channel for the Mermentau River into the Gulf. The present mouth of the river is silted up and not open to barge traffic.

### KC INSTALLS OFFICERS

Recently elected officers of the J. P. Boudoin, Sr. Council 3014 of Creole were installed at very impressive modern ceremonies Thursday by Dist.

Sales & Service — New & Used

We Service All Makes & Models

In Lake Charles

Shetler Lincoln — Mercury

478-1720 Or 1-800-460-5461

3201 HWY.

### SERVICE EXCELLENCE

Whether you have a home, small business or industry  
**McKenzie Pest Control**  
has the expertise to solve your pest and/or termite problems

**McKenzie Pest Control**



Serving the Lake Area for over 50 years

Keith Dubrock, President  
717 Gulf St., Lake Charles, La.

478-7826

### TO THE VOTERS OF CAMERON PARISH WATER AND SEWER DISTRICT NO. 1

On July 20, 2002, the voters of District No. 1 will be asked to vote for a Proposition, to combine the Water and Sewer Districts together. The Proposition will combine all current and future funds. A collectable millage will be assessed of 9.40 mils, will be on the ballot replacing the current collectable millage assessed at 13.40 mils.

This will be a savings of 4 mils to the taxpayers. The combining of the Districts will reduce operating expenses and allow the Board to reduce sewer rates immediately following the election by \$1.00 per month for the customers.

These things can only happen if this Proposition passes on July 20, 2002.

For more information or if you have questions please call one of the following Board Members.

J. C. Murphy -- 775-5929  
Chris Hebert -- 775-7313  
Butch Willis -- 775-7165  
Bobby Doxey -- 775-5216  
Vergy Hebert -- 775-5652  
Tammy Peshoff -- 775-5973  
Ronald January -- 775-5047

## Are You Paying Too Much?

AT&T, MCI, WorldCom and Sprint  
Long-Distance Rates Have Gone Up!

There's never been a better time to  
switch Cameron Long Distance.

- One easy-to-understand bill.
- No hidden fees or additional charges.
- Reliable service from a company you know.

Choose the Plan That Works for You

Choice A:

If you make very few calls but still want a low flat rate, then this plan is for you.

13¢ per minute, no monthly fee

Choice B:

If you are a high-volume user, you'll increase your long-distance value with this plan.

10¢ per minute, \$4.95 monthly fee

Both plans include in-state or out-of-state calls—24 hours a day, every day—no restrictions or exclusions.

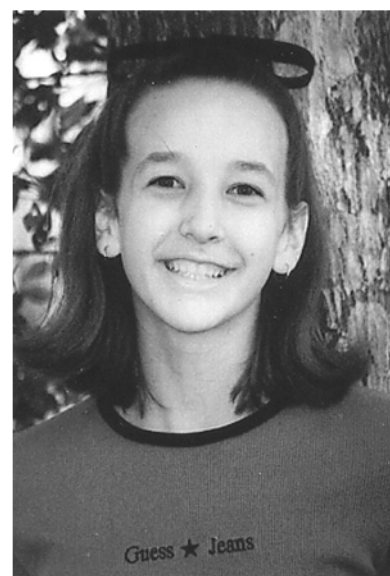


Call 1 800 673-3113



Toll-Free 800 Service Is for Everyone!

Call from anywhere in the US. Great for students or travelers calling home.  
13¢ per minute, \$4.95 monthly fee



Alexandra McCain

## Alexandra is honored

The United States Achievement Academy announced that Alexandra McCain of Sulphur has been named a United States National Award Winner in Science.

Alexandra, who attends W. W. Lewis Middle School was nominated for this national award by Mrs. LaGrappe, a teacher at the school.

Alexandra is the daughter of Curt and Becky McCain from Sulphur. The grandparents are Bobby and Bernice LaLande of Cameron and Terry and Judy Conner of Creole and Vernon and Jolene McCain of Iowa.

Deputy Jules Snatic and Ivy Meaux.

The Council is headed by Pat Doland as Grand Knight, Blanc Bonsall as DKG, Darrell East as treasurer, Johnny Boudoin as Financial Secretary, Robert Landry as Advocate, Fredman Theriot as Warden, Whitney Baccigalopi as Lecturer, Charles Larry Conner as Inside Guard, and Ronnie Conner as Outside Guard.

### CLUB OPPOSES WATER DIVERSION

The Cameron Lions Club adopted a resolution at its meeting last week opposing the proposed plan to divert some of the water from the Mississippi River to West Texas and New Mexico.

Tom Steed, club president, told the club that such a diversion would have a very harmful effect on the Louisiana coastal area and would be detrimental to the shrimping industry.

A group of 4-Hers from Colorado, who were visiting with 4-Hers in Calcasieu Parish in an exchange program, were guests of the club.

The club is in the process of building four cabanas on Rutherford Beach for use by the public. An enclosure to protect children will also be built.

### ROUNDOABOUT THE PARISH

The East Cameron Port, Harbor, and Terminal District will open bids on Sept. 9 on the purchase of \$1 million in harbor and navigation public improvement bonds.

Mrs. Estelle Daigle and Edna visited in Lake Charles

## Genealogy workshops announced

The Genealogy Department located at the Carnegie Memorial Library in Lake Charles will hold a series of workshops on Genealogy research.

The first workshop held on June 15 covered the topic Introduction to Genealogy-how to begin where to look for information, use of a timeline, and how to use library resources.

The second workshop being held on July 20 will start at 10 a.m. and end at noon. The topic covered will be Organizing and Preserving Records-numbering of charts, color coding, documenting, and preserving original records.

The final workshop will be on Aug. 17 from 10 a.m. until noon. The topic covered will be Computer Programs and internet Access for Genealogy. Refreshments will be served and door prizes will be awarded.

The Genealogy Department will also hold a workshop entitled Computer Genealogy Classes. This workshop will be from August 20-22, from 9 a.m. until noon. This workshop will be held at Central in the Electronic Resource Center and will be a hands-on class for beginners who want to learn more about doing research and how to operate the computer with guidance.

A sign-up sheet after the last Beginning Workshop on Aug. 17 will be available.

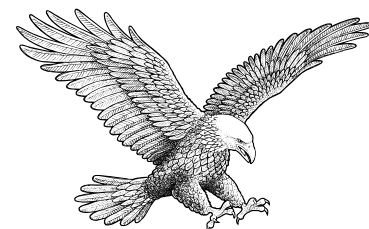
last week with her daughter, Mr. and Mrs. A. M. Baggett and Pat. Estelle's sister, Mrs. Virginia Lempke of Nederland, also visited with them.

Army Private First Class Floyd Benoit, son of Mr. and Mrs. Sidney Benoit, Cameron, arrived in Vietnam May 26 and has been assigned to the 52nd Artillery Group as a cannoneer.

Eight youths attended the Calcasieu Missionary Association in DeRidder last Tuesday. They were: Cornelia, Patricia, Anthony and Rudolph Bartie; Marvin and Melvin LaSalle; Vickie Sturlese; and Gregory Harrison.

Home for the holiday weekend from Grambling College were Misses Mary Ruth Andrews, Harriet and Theresa Washington, and Gilda Bargeman.

Four students from South Cameron High School were among those enrolled in the McNeese Summer Music and Twirling Camp which ended Saturday. They were: RoRisia Renia, Candy Henry, Celeste Hooper, and Felice Dardeau.



God Bless  
America

## Happy Ads

Are Here Again!!!



Price includes Photo and Artwork. Bring your request along with photo and payment to Clipper Office Supply by 4 p.m. Monday or Mail to P.O. Box 995, DeQuincy, La. 70633. Ads must be signed.

- \* Birthday
- \* Anniversary
- \* Promotion
- \* League Championship
- \* Graduation
- \* New Baby
- \* Bon Voyage
- \* Good Luck

Place A Happy Ad  
For As Little As

\$20.50

Congratulations! You've found a terrific way to send your best wishes to someone special for any occasion

The Cameron Pilot

Call or come by now and make someone's day!  
786-8004 or Toll Free: 1-800-256-7323

# CLASSIFIEDS

## REAL ESTATE

CREOLE, 967 E. Creole Hwy. 4 Bedroom, 2 bath, brick home. 1800+ sq. ft. recently remodeled. Option to buy 4 acres of land. Great for hunting. \$49,900. (337)542-4221. 7/18-8/15p.

HOUSE FOR Sale: 4497 West Creole Hwy. just west of Dr. Sander's office. 4 Bedroom, 2 bath on 1/2 acre approx. 1800 sq. ft. Asking \$53,000. Shannon or Aquilla, 584-3308 or 496-4848. 6/27-7/18p.

GRAND LAKE - Restricted subdivision, 2000 sq. ft. minimum \$15,000. Call ERA Moffett Realty, Inc. 436-6639 ext. 261 and ask for Grace - 598-2573 home or 490-5140 pager. 2/14tfc

## FOR SALE

FOR SALE: 55' Steel hull Shrimp Boat, V1271 Detroit diesel, 4.5 to 1 gear, 271 generator, HOAIRTRANG, \$45,000 or best offer. Excellent condition. Call 1-409-466-4137 or 1-409-832-4139. 7/4-25p.

METAL OUTLET Metal Roofing ~ Carports ~ Metal Buildings ~ Patio Cover Kits ~ C's & Z's ~ Custom Trim ~ RV & Equipment Covers ~ Metal Doors ~ Windows. 337-625-2778. 2241 E. Napoleon, Sulphur. Open Mon.-Fri. 7 am-5 pm, Sat. 7 am-12 noon. tfc.

## FOR SALE

CLASSIFIEDS WORK! Join the hundreds of advertisers who sell unneeded merchandise through the classifieds. only \$4 for 25 words or less, each additional word 10 cents. Pre-paid please! Check or money order. Deadline each Wednesday, 10 a.m. You can count on classifieds! Cameron Parish Pilot, P. O. Box 995, DeQuincy, LA 70633 or try the convenience of paying for your ad at Clipper Office Supply located at 128 School Street in Cameron.

## GARAGE SALES

6 FAMILY Garage Sale, 482 Marshall St., next to Pitstop, Sat., 8 - 12. Early Birds Pay Double! Men, women and children clothes, leather coats, furniture, household items, sewing machine, tools and lots of miscellaneous. 7/18p.

## RV SALES

2002 CLEARANCE Sale on all new and used units. Kite Bros RV, Hwy 171 N DeRidder. Mon-Sat 8-5, 1-800-456-2724. www.kitebros.com 5/23tfc.

## USED CARS

COME SEE this '99 Ford Expedition Eddie Bauer, loaded with leather and a beautiful color. Call Lamar at Auto Plex 2000, 337-479-1021. 7/18c.

## USED CARS

CHECK OUT this 2000 Ford Windstar, loaded with rear air. Let us finance you and get your credit back on track. Call Ryan at Auto Plex 2000, 337-479-1021. 7/18c.

MUST SEE this 2000 Mercury Cougar with less than 20,000 miles. Call Bob at Auto Plex 2000, 337-479-1021. 7/18c.

GOT BAD credit, don't worry.. it won't stop you from buying this '99 Taurus loaded up. Call Jay at Auto Plex 2000, 337-479-1021. 7/18c.

1997 TOYOTA Rav 4, affordable and easy financing. Call Russell at Auto Plex 2000, 337-479-1021. 7/18c.

1998 CHEVY Prism. Credit problems? Let us help you. Call Jimmy at Auto Plex 2000, 337-479-1021. 7/18c.

CHECK OUT this '98 Chevy Sportsite with only 40,000 miles. Call Ryan at Auto Plex 2000, 337-479-1021. 7/18c.

1998 CHRYSLER Sebring sitting on 17 inch blades. Call Jay at Auto Plex 2000, 337-479-1021. 7/18c.

CHECK OUT these Ford Contours. I have '98 & '99 models, various colors. Call Derrick at Auto Plex 2000, 337-479-1021. 7/18c.

DON'T LET your credit stop you from driving this 1999 Pontiac Grand Prix SE. We specialize in bad credit. Call Lamar at Auto Plex 2000, 337-479-1021. 7/18c.

## WORK WANTED

HOUSE, CAMP or office cleaning. Plenty of experience. Call 542-4382, Cissy Nunez. 7/18p.

## FOR RENT

FOR RENT: 3 Bedroom, 2 bath house. Central heat and air. Located in Creole. \$400 month. \$200 security deposit. Phone: 337-774-1010. 7/11-25p.

## DIRT & GRAVEL

DIXIE DIRT and Sand serving Cameron Parish with top soil, sand, clay, building house pads, driveways clearing land, delivery of limestone, road base, bottom ash rock. Local owners are Butch and Jackie Bertrand, 24 hour answering service 598-2485, Office 542-4693. 5/16-8/1p.

## PETS

"BULLETT PROOF" available for adoption, looks like a young Sealyham terrier. Two buckshots went through him but he is a survivor. Friendly, intelligent. Call 824-7027 or visit Cameron Parish Dog Pound. 7/18-25p.

# Cameron Outdoors

By LOSTON MCEVERS



## FISHING REPORT

It seems the thunderstorms have shifted from late evenings to before daybreak through the morning hours. Heavy rains will surely make another change in our fishing, both saltwater and freshwater. Water was clearing up not only on Big Lake, but in the Mermentau River, the big burns and Amoco, but we'll probably see some muddy water for a week or so. The heavy rains could impact trout fishing on Big Lake, if too much fresh water comes down to the lake.

Jared Savoie and I tried one day last week in Big Lake fishing before day until around 10 a.m., but didn't do any good on speckle trout. Travis and Joy Broussard and Evia Nunez made a trip and caught a couple of nice trout. I really think the water is starting to warm up and the trout will move to the ship channel or deeper water.

Freshwater fishing in the Big Burn is slow on bass, however Amoco was starting to pick up, but this rain will again slow things down.

As of this writing, anglers fishing on the wharfs in Big Lake are catching lots of trout under the lights, and the best time was in the middle of the night starting around 10 p.m., this past week.

## SEASONS SET

The statewide alligator season has been set by the La. Wildlife & Fisheries Commission for wild alligators on Wednesday, Aug. 28 through Sept. 30.

The 2001 alligator season had an average length of just over seven feet, 31,457 alligators were harvested. An additional 3,126 alligators averaging 5.8 feet were harvested as part of the Bonus Tag Program. The estimated wild hide and meat value for the entire 2001 harvest was \$8.9 million.

Other tentative dates set that must be approved by the U. S. Fish & Wildlife Service are: Woodcock Dec. 18 - Jan. 21, daily limit 3, possession 6; teal, rails, gallinule Sept. 21 - 29; mourning doves, Sept. 7-15, Oct. 12 - Nov. 24, Dec. 21 - Jan. 6. Quail - Nov. 16-Feb. 28; Rabbit - Oct. 5-Feb. 28; Squirrel Oct. 5-Feb. 9. Beginning this year, eurasian

Collared Doves and ring-necked turtle doves, can only be taken during the open mourning dove season. There is no bag limit on either one of these doves, provided that a fully feathered wing and the head remains attached to the carcass of the bird. If they're fully dressed, without feathered wing and head, then they would be counted in the mourning dove limit.

Shrimp season in Zone 3, which includes Cameron Parish inland waters, closed last Monday morning July 15 at 6 a.m.

## NEWS BRIEFS

Ron Castille and Capt. Sammie Faulk will hold weekly speckle trout dogfights on Tuesday evenings, starting July 15 and will run for 5 consecutive weeks. Registration will be at 4:30 p.m. until dark. Teams of up to 3 people per boat can fish at a \$60 entry fee, and each boat can weigh-in two speckle trout. Also a \$2 entry bonus for the biggest trout kept alive and can be released back into the lake, winner take all. The dogfights will take place out of Hebert's Marina on Big Lake.

## GIBBSTOWN DOGFIGHT

The results of the July 1 dogfight was: 1st. Danny Demary & Doug Logan, 3 bass, 5.68 pounds and the largest bass 3.32 pounds. 2nd place went to Rodney Breaux, Jr. and Russell Bennett, 3 bass, 5.42 pounds and the second place largest bass of 2.81 pounds. Richard Duhon had the largest choupique weighing 4.47 pounds.

The July 8 results were: Sam Bordelon and Clay Lemaire, 3 bass, 3.97 lbs. for first place and also the first place largest bass 2.05 lbs. Second place went to Rodney and Gerald Breaux 3 fish, 3.83 lbs.

The Lemesche Bass Club will hold their fifth tournament of the year fishing out of Amoco on Sunday, July 21 with weigh-in at 3 p.m. This is a pick-your-partner tournament.

## DAYTIME FEEDING

Best, Fri., July 19 - 7:45 a.m. & 8:15 p.m.; good, 2 p.m. Best, Sat., July 20 - 8:30 a.m. & 9 p.m.; good - 2:45 p.m. Best, Sun., July



**DANIEL LONGWORTH** was promoted to sergeant first class March 15. He is stationed at Ft. Drum, NY, after spending almost one year overseas with the 10th Mountain Rangers, 101st Airborne Division. He is the son of Dan and Sandy Longworth and graduated from Hackberry High School in 1989. He was on the wrestling team and went to the State Championship in 1986 and 1987. He is married to Kathy Longworth of Georgia.

21 - 9:30 a.m. & 10 p.m.; good - 3:45 p.m.; Best, Mon., July 22 - 10:15 a.m.; good - 4:30 p.m. Best, Tues., July 23 - 11:15 a.m.; good, 5 a.m. & 5:15 p.m. Best, Wed., July 24 - 12 noon; good, 6 a.m. & 6:15 p.m. Best, Thur., July 25 - 1 p.m.; good, 6:45 a.m. & 7 p.m.

## DATES TO REMEMBER

Every Monday - Gibbstown Dogfights - 5:30 p.m.

Through Sept. 2 - C.C.A. - S.T.A.R. tournament - (225)952-9200

July 21 - Lemesche Bass Club fifth yearly tournament, Amoco, pick your partners, weigh-in 3 p.m.

July 16 and every Tuesday through Aug. 13 - Speckle trout dogfight - Hebert's Marina 4:30 p.m.

P.S. Inland Shrimp Season for Zone 3 (Cameron Parish) is closed.

## An Invitation To Apply For Superintendent of Schools Cameron Parish School Board

### Qualifications:

Applicant must possess a valid LA certificate with Superintendent endorsement at time of application or

Applicant must possess the qualifications to obtain the above certificate and endorsement at time of application.

### Contract Terms:

Salary range \$70,000 - \$90,000

2 year contract

Tenure cannot be earned or transferred.

### Timetable:

Application must be received no later than

August 12, 2002.

It is desirable that the new Superintendent be able to begin duties on October 7, 2002.

### Benefits:

Annual leave, sick leave, state retirement, insurance, and travel expenses as provided by state law and Board policy.

Those who wish to have additional information may contact:

Judith Jones, Superintendent  
Cameron Parish School Board  
P. O. Box 1548, Cameron, LA 70631  
337-775-5784

RUN: July 11, 18, 25 (JU-18)

"Equal Opportunity Employer"



# TENT SALE

JULY 20

## ON DISCONTINUED ITEMS

(Pullovers, Vests, Sweaters, Button-down Cardigans, Adult Longsleeve Polos, Tights and More.)

# SURPLUS UNIFORM STORE

3620A Maplewood Dr., Sulphur  
626-0020 or Toll Free 1-866-382-6025

Boys and Girls uniforms available in SLIM, REGULAR & HUSKY  
YOUNG ADULTS & ADULT sizes available including JUNIORS

DICKIES YOUTH PIQUE POLO SHORT SLEEVE SHIRTS (ALL COLORS)

XS-S \$7.99 MED. \$8.99 LARGE \$9.99 X-LARGE \$11.99

PRINT ONE SMOOTH POLO SHORT SLEEVE SHIRTS

Youth S-L \$10.99 Adult S-XL \$13.99 2XL \$14.99

Youth Oxford	Peter Pan Blouse	Stretch Blouse	Kit Polo
4-7 \$7.99	4-6X \$6.99	4-6X \$11.99	w/Trim Collar
8-14 \$9.99	7-14 \$7.99	7-14 \$12.99	4-6X \$8.99
16-20 \$11.99	16-20 \$8.99	16-20 \$13.99	7-14 \$9.99
		Juniors \$15.99	16-20 \$10.99

Shorts (Skirts)	Skirts	Jumpers -	Pants -
Khaki or Navy	Khaki or Navy	Khaki or Navy	Khaki or Navy
B4-7 G4-6X \$10.99	4-6X \$8.99	4-6X \$13.99	B4-7 G4-6X \$12.99
B8-20 G7-20 \$11.99	7-20 \$10.99	7-20 \$14.99	B8-20 G7-20 \$15.99
Husky \$13.99	Husky \$11.99	Husky \$15.99	Husky \$17.99

Women & Mens Pleated Shorts	Dickies Adult Polos	Women & Mens Pleated Pants
Khaki or Navy	Navy, White, Red, Royal Blue, Hunter Green	Khaki or Navy
M28-38, W4-18 \$14.99	S-XL \$11.99	M28-38 \$20.99 M40-44 \$22.99
M40-44, W20-26 \$16.99	2XL \$12.99	W4-18 \$17.99 W20-26 \$19.99
(Plain Front \$1.00 Extra)	3XL \$15.99	(Plain Front \$1.00 Extra)
Juniors Plain Shorts \$14.99	4XL \$17.99	Juniors Plain 3-13 \$17.99

Accessories: Belts, Socks, Tights & Hair Scrunches



Seasonal Store Hours from July 1st thru August 31st  
10 a.m. - 6 p.m. Monday - Saturday

Competitive Prices • Visa/MC Accepted • Layaways Available • Customer Service Satisfaction Guaranteed

# THE GUMBO POT

## COURTBOUILLON (Lagniappe-LSU Extension Service)

Courtbouillons are the classical Cajun finfish soup. Typically, they have a rich, spicy tomato broth. In recent years, the tendency has been to tone down the pungency of the tomato by the addition of roux. This recipe is in between the classical red courtbouillon and the "newfangled" brown courtbouillions. Any firm-fleshed fish can be used.

3 lbs. fish fillets, 3/4 cup oil, 3/4 cup flour, 1 cup chopped onions, 1 cup chopped celery, 1 cup chopped bell pepper, 2 tbsps. minced garlic, 2 cups sliced mushrooms, 2 8-oz cans tomato sauce, 1 1/2 qt. water, 1 tsp. dried thyme, 1 tsp. dried basil, 3 bay leaves, 3 lemon slices, 1 cup chopped green onions, 1 cup chopped parsley, salt and pepper to taste.

Cut fillets into bite-sized pieces. In a one gallon or larger heavy-bottom sauce pan, preferably cast iron, heat oil over medium high heat. Using a wire whisk or wooden spoon, add flour, stirring constantly until a dark brown roux is made. Add onions, celery, bell pepper, garlic, and mushrooms, and saute until vegetables are wilted, approximately three to five minutes. Add tomato sauce, and stir well. Add water and stir until well-mixed. Add thyme, basil, bay leaves, and lemon slices. Bring to a boil, reduce to a simmer and cook thirty minutes. Add water to retain volume. Add green onions and parsley, and season to taste using salt and pepper. Cook an additional ten minutes, then add fish pieces. Stir occasionally, but gently until fish is done, approximately five to ten minutes. Serve over rice. Serves 6.

## I Lester P. Logray Apologize

### For Polluting The Environment

I am publicly apologizing to the Citizens of Cameron Parish, the Cameron Parish District Attorney's Office, and the Louisiana Department of Environmental Quality for illegally discharging oil field brine at an unpermitted site on Constance Beach.

I committed this act of my own accord, without regard for the environment or the citizens of Cameron Parish. I have been ordered to make this public apology.

I want to assure the citizens of this parish that I will take all steps necessary to ensure that in the future I will respect all environmental laws. I hope other potential violators will learn from my experience.



### LEGAL NOTICES Cont. from Page 6.

TUESDAY, AUGUST 13, 2002, upon the application of LLOG EXPLO- RATION COMPANY.

At such hearing the Commissioner of Conservation will consider evidence relative to the issuance of an Order pertaining to the following matters relating to the PLANULINA P2 SAND, RESERVOIR A, in the Lake Misere Field, Cameron Parish, Louisiana.

1. To establish rules and regulations governing the exploration for and production of gas and condensate.

2. To create a single drilling and production unit for the exploration for and production of gas and condensate.

3. To force pool and integrate all separately owned tracts, mineral leases and other property interests within the proposed unit, with each tract sharing in unit production on a surface acreage basis of participation.

4. To designate a unit operator and a unit well at a location in exception to the well spacing provisions of Statewide Order No. 29-E for the unit so created.

5. To provide that any future replacement or alternate unit wells drilled to the Planulina P2 Sand, Reservoir A, should be exempt from the spacing provisions of Statewide Order No. 29-E.

6. To provide that the Commissioner of Conservation should be authorized to reclassify the reservoir by supplemental order without the necessity of a public hearing if the producing characteristics of the reservoir change and evidence to justify such reclassification is submitted to and accepted as by the Commissioner of Conservation.

7. To consider such other matters as may be pertinent.

The Planulina P2 Sand, Reservoir A, in the Lake Misere Field, Cameron Parish, Louisiana, is hereby defined as being that gas and condensate bearing sand encountered between the depths of 12,248' and 12,474' (ELM) in the Southwestern Energy Production Company - Miami Corp No. 27-1 Well, located in Section 27, Township 13 South, Range 5 West.

A plat is available for inspection in the Office of Conservation in Baton Rouge and Lafayette, Louisiana or may be found at the following site:

www.dnr.state.la.us/CONS/CONSERVEN/hearings/pubhearings.htm.

All parties having interest therein shall take notice thereof.

BY ORDER OF:  
**JAMES H. WELSH**  
COMMISSIONER OF CONSERVATION

Baton Rouge, La  
7/9/02;1/12/02  
L  
dpe

If accommodations are required under Americans With Disabilities Act, please advise the Office of Conservation Engineering Division at P. O. Box 94275, Baton Rouge, La 70804-9275 in writing within ten (10) working days of the hearing date.  
RUN: July 18 - Ju 33

**Cameron Parish Waterworks District No. 7**

Cameron Parish Waterworks District No. 7 met in regular session on February 20, 2002 at 5 p.m. at the Waterworks District Office in the Village of Creole, Louisiana. Members present: Wilson Conner, Guy Murphy Jr., Sandra Ford and Jude Primeaux. Members absent: Daniel Dupont. Guest: Kyle Theriot and Lonnie Harper.

Wilson Conner called the meeting to order, led everyone in the Pledge of Allegiance, and called roll.

It was moved by Jude Primeaux, seconded by Guy Murphy Jr. and carried, that the reading of the minutes of the previous meeting be dispensed with and approved.

A motion was made by Sandra Ford, seconded by Guy Murphy Jr. and carried to approve the financial statement.

Guy Murphy Jr. made a motion to accept and approve Estimate #11 from Hartec Corporation for \$121,288.74 pending U.S.D.A. approval and for Lonnie Harper for \$12,165.83, it was seconded by Sandra Ford, and carried.

Jude Primeaux made a motion to pay the monthly bills, it was seconded by Sandra Ford and carried.

Kyle Theriot discussed getting the new water lines ran down Richard Road.

Sandra Ford made a motion to adjourn, it was seconded by Guy Murphy, Jr. and carried.

/s/Dan Dupont  
Approved  
Daniel Dupont, Vice-President  
RUNS: July 18 - Ju 34

**Cameron Parish Waterworks District No. 7**

Cameron Parish Waterworks District No. 7 met in regular session on March 25, 2002 at 5 p.m. at the Waterworks District Office in the Village of Creole, Louisiana. Members present: Wilson Conner, Guy Murphy Jr., Daniel Dupont, Sandra Ford and Jude Primeaux. Members absent: Daniel Dupont. Guest: Lonnie Harper.

Wilson Conner called the meeting to order, led everyone in the Pledge of Allegiance, and called roll.

It was moved by Jude Primeaux, seconded by Daniel Dupont and carried, that the reading of the minutes of the previous meeting be dispensed with and approved.

A motion was made by Sandra Ford, seconded by Guy Murphy Jr. and carried to approve the financial statement.

Daniel Dupont made a motion to accept and approve Estimate #12 for Lonnie Harper for \$13,048.94 pending U.S.D.A. approval, it was seconded by Sandra Ford, and carried. Hartec would be Federal Expressing the Board a credit.

Jude Primeaux made a motion to pay the monthly bills, it was seconded by Sandra Ford and carried.

A motion was made by Daniel Dupont, seconded by Sandra Ford and carried for the Water District to split the surveying at Well Site No. 3 with the Fire District.

Guy Murphy, Jr. made a motion to change the meeting dates from the 3rd Wednesday of the month to the 3rd Tuesday of the month, it was seconded by Daniel Dupont and carried.

Sandra Ford made a motion to adjourn, it was seconded by Guy Murphy, Jr. and carried.

/s/Dan Dupont  
Approved  
Daniel Dupont, Vice-President  
RUNS: July 18 - Ju 35

# No magical food for athletic performance Learning a college budget

By BETH REAMES

Some athletes have favorite foods they associate with being ready to compete, but LSU AgCenter nutritionist Dr. Beth Reames says there isn't any magical food that provides special powers.

The nutritionist says a pre-competition meal should include familiar foods that are part of a well-balanced program of eating.

"Comfort is the main criterion on an athlete should consider when eating before a contest," the nutritionist says, explaining, "Game day is not the time to experiment with new foods or change eating patterns."

She says the best foods to eat before the start of any exercise are those rich in carbohydrates, particularly complex carbohydrates, because these foods are easy to digest and provide fuel during prolonged exercise. Examples include breads, cereals, fruits and vegetables. Skim milk and small portions of lean meats also may be eaten.

Nevertheless, if you're not accustomed to eating high-fiber foods, you may experience gas, discomfort or diarrhea. Stick with familiar foods and to eat them in moderate amounts.

Whatever you eat, though, allow plenty of time for the food to digest to avoid discomfort before and during competition. Wait three to four hours after a heavy meal or one to two after a lighter meal. Avoid high-fat foods, because they take longer to digest.

"Include liquids with the meal, because hydration is essential for top athletic performance," Reames says, explain-



Cameron Parish Waterworks District No. 7

Cameron Parish Waterworks District No. 7 met in regular session on April 23, 2002 at 5 p.m. at the Waterworks District Office in the Village of Creole, Louisiana. Members present: Wilson Conner, Guy Murphy Jr., Daniel Dupont, Sandra Ford and Jude Primeaux. Guest: Lonnie Harper and Scott Trahan.

Wilson Conner called the meeting to order, led everyone in the Pledge of Allegiance, and called roll.

It was moved by Jude Primeaux, seconded by Daniel Dupont and carried, that the reading of the minutes of the previous meeting be dispensed with and approved.

A motion was made by Daniel Dupont, seconded by Guy Murphy Jr. and carried to approve the financial statement.

Daniel Dupont made a motion to accept and approve Estimate #13 for \$104,200.53 minus \$50,000 for chlorinating and clean up pending U.S.D.A. approval. It was seconded by Sandra Ford, and carried. The remaining \$50,000 would be paid when Board was satisfied with said clean up.

Jude Primeaux made a motion to pay the monthly bills, it was seconded by Sandra Ford and carried.

Guy Murphy, Jr. made a motion to adjourn, it was seconded by Daniel Dupont and carried.

/s/Dan Dupont  
Approved  
Daniel Dupont, Vice-President  
RUNS: July 18 - Ju 36

**BID NOTICE**

Cameron Parish Waterworks District No. 2 will be accepting bids on (1) Rawson Koenig T series truck service bed to be installed on a single wheel long wheel base 3/4 ton truck chassis.

Bids will be accepted until 7:00 p.m. on August 7, 2002. All bids should be sealed and envelopes should be marked on outside "Bid for chassis."

Cameron Parish Waterworks District No. 2 has the right to accept or decline any or all bids.

Delivery date must be 30 days after bid opening.  
RUNS: July 18, 25, Aug. 1 - Ju 37

**BID NOTICE**

Cameron Parish Waterworks will be accepting bids on a 2002 or 2003 3/4 ton pickup truck less the bed (no bed).

Truck to be of specifications described by Cameron Parish Waterworks District No. 2. Specifications can be picked up at water office in Hackberry. Bids should be on truck alone and also with trade-in of 1995 F150 Ford pickup.

All bids should be sealed and envelopes marked on outside "Bid on truck." Bids will be accepted until 7:00 p.m. on August 7, 2002.

Delivery date must be 30 days after bid opening.

Cameron Parish Waterworks District No. 2 has the right to accept or decline any or all bids.  
RUNS: July 18, 25, Aug. 1 - Ju 38

**AUTO BID**

Bids will be accepted by Cameron Parish Sheriff for the purchase of one 2002 or 2003 Mercury Grand Marquis L.S. Bids are to be delivered to Cameron Parish Sheriff Office, P. O. Box 1250, Cameron, LA 70631 on or before 9:00 a.m. Friday, August 2, 2002. The right is reserved by the Sheriff to reject any and all or to accept any bid which in the opinion of the Sheriff will be of the best interest of the Parish of Cameron and the Cameron Parish Sheriff Department.

/s/James R. Savoie  
James R. Savoie, Sheriff  
RUNS: July 18, 25, Aug. 1 - Ju 39

ing, "Dehydration impairs performance by causing cramps, weakness and headache. Untreated, dehydration can cause heat stroke. Heat stroke kills about 400 people in the United States each year."

Drink two or three cups of fluid with the meal, the nutritionist says, adding, "But don't stop there. Drink fluid up to the time of, throughout and after the event."

Cool water is the recommended fluid for most types of exercise of one hour or less under moderate temperature conditions. During exercise, drink 1/2-1 cup of fluid every 15 to 20 minutes. After exercising, drink at least 2 cups of fluid per pound of body weight lost during exercise or until urine is pale/clear.

In very hot and humid conditions, sports drinks or diluted juices help to replace electrolytes, including sodium and potassium, lost through sweat. "Since they are flavored beverages, they are often preferred over plain water," Reames points out, saying such beverages also contain carbohydrates, which help to provide energy, especially in strenuous exercise of one hour or longer.

Foods eaten after the event are usually sufficient to replace electrolytes.

Reames recommends contacting an extension agent in your parish LSU AgCenter office to learn more about food for athletes. In addition, refer to the Family and Consumer Sciences section under the Louisiana Cooperative Extension Service at the LSU AgCenter Web site: http://www.lsuagcenter.com/.

## Coastal use permits listed

Coastal Use Permit applications have been received by the Dept. of Natural Resources for the following projects in Cameron Parish:

\*Cameron Parish Gravity Drainage District 5 for maintenance dredging of 14 existing channel along the Mermentau River in the Grand Chenier area. Approximately 13 acres of water bottom will be impacted by the activity.

\*Dywegy Midstream Services, to install rip rap and other material to repair and cover a bulkhead and existing pipelines in the Grand Chenier area.

**NOTICE OF PUBLICATION  
OFFICE OF MINERAL RESOURCES  
DEPARTMENT OF NATURAL RESOURCES  
STATE MINERAL BOARD  
FOR THE  
STATE OF LOUISIANA  
BATON ROUGE, LOUISIANA 70821**

By virtue of and in conformity with the provisions of Sub-part A of Chapter 2, Title 30 of the Louisiana Revised Statutes of 1950, as amended, and other applicable laws, sealed bids will be received in the Office of Mineral Resources, LaSalle Office Building, Baton Rouge, Louisiana (P. O. Box 43821, Baton Rouge, Louisiana 70802) or before 12:00 noon on Tuesday, September 10, 2002 for a lease to explore, drill for and produce oil, gas and any other liquid or gaseous minerals in solution and produced with oil or gas on the following described tracts (Tract Nos. 34806 through 34952 inclusive) to be opened publicly Wednesday, September 11, 2002 in the LaSalle Office Building, 517 N. 3rd Street, Capitol Complex, Baton Rouge, Louisiana.

All bids shall offer a "Cash Payment" bonus, as set forth on the authorized bid form, for a lease having a primary term in conformity with whether said lease is an inland or offshore lease and the said bonus shall maintain the lease in full force and effect for the first year, if the bid offers an **ANNUAL DEFERRED RENTAL**, which is the amount of the bonus plus interest for the term of the lease or more, but not less than one-half (1/2) of the Cash Payment bonus bid and any bids containing an annual rental of less than one-half (1/2) of the Cash Payment bonus will be increased to the one-half (1/2) amount. Any lease granted shall be without warranty or any recourse whatsoever, either express or implied, against Lessor with regard to questions of title, not even for the return by Lessor of any payments received under the lease or being otherwise responsible therefore to Lessee. Under L.S. R. S. 30:127, the **Minimum Royalty bid** cannot be less than one-eighth (1/8) of all oil, gas or other liquid or gaseous minerals in solution and produced with oil or gas and saved or utilized. **Rights to geothermal resources, free sulphur, potash, lignite, salt and other solid minerals are to be excluded from any oil or gas mineral lease and any bid purporting to include those rights will be disregarded as to the extent of those rights only.** All bidders are notified that the Mineral Board does not obligate itself to accept any bid, and that acceptance is at the sole discretion of the Mineral Board which reserves the right to reject any and all bids or to grant a lease on any portion of the tract offered to and to withdraw the remainder of the tract.

Act 8 of the 2000 Second Extraordinary Legislative Session established two additional fees to be collected from mineral leases on all mineral leases awarded on state owned lands and waterbottoms. **An additional fee of \$10 per acre will be collected and deposited into the Louisiana Wildlife and Fisheries Conservation Fund.** An additional fee of \$5 per acre will be collected and deposited into the Oil and Gas Regulatory Fund. A separate check in the amount of \$15 per acre made payable to the Office of Mineral Resources shall be submitted, either accompanying the original bid (inside the sealed bid envelope) or mailed to the Office of Mineral Resources for receipt within ten (10) days after the bid is accepted and the lease is awarded. Bidders may use a regular check for payment of the fees. The successful bidder will not receive the lease executed by the State Mineral Board until the fees are received.

All leases awarded shall be executed upon terms and conditions provided in the current State lease form with all applicable riders appended thereto a copy of which is available for review in the Office of Mineral Resources, Petroleum Lands Division, Leasing Section.

**Certified check, cashier's check or bank money order payable to the OFFICE OF MINERAL RESOURCES** for the full amount of the aforesaid Cash Payment bonus shall be submitted with and accompany each bid, and no bid, once submitted, may be thereafter withdrawn or canceled. Once the bid is opened and accepted by the Mineral Board, the accompanying checks or money order shall be negotiated by the Office of Mineral Resources and the proceeds disbursed in the manner required by law.

**SPECIAL NOTE:**

Under rules promulgated by the Department of Natural Resources in accordance with authority granted by Act 13 of the First Extraordinary Session of the Louisiana Legislature of 1988, a **fee equal to ten percent (10%) of the Cash Payment bonus** bid is required and shall be collected and deposited into the **Oil and Gas Regulatory Fund** (inside the sealed bid envelope) or mailed to the **Office of Mineral Resources** for receipt within ten (10) days after the bid is accepted and the lease is awarded. Bidders may use a regular check for the 10% fee. The successful bidder will not receive the lease executed by the State Mineral Board until the fee is received. If the fee is not received within the ten (10) day period, the bid for the lease shall be null and void. All bidders are notified that the fee is not to be applied to the bid if the bid is unsuccessful, both the fee check and the Cash Payment bonus check will be returned to the unsuccessful bidder.

The successful bidder to whom the lease is awarded who receives the written lease executed by the State Mineral Board must immediately tender and deliver to the Lessee, upon execution of the lease instrument, within **TWENTY (20) DAYS** of receipt of same under penalty for failure to do so of forfeiture of the lease, including the Cash Payment bonus and fee tendered and negotiated.

Bids may be for the whole or any particularly described portion of the land advertised, but consistent with Mineral Board policy. All bidders are hereby notified that bids on portions of tracts shall be described by metes and bounds and be accompanied by a transparent plat outlining therein the portion bid upon. The scale of the transparent plat shall be the same as the scale of the **OFFICIAL PLAT (NOT THE F & A PLAT) CONTAINED HEREIN** and should identify the Point of Beginning with X and Y coordinates (if applicable), the Section, Township and Range, the Block No. (if offshore), the Parish, any adjacent existing State Mineral Lease, and, further, should clearly show the entire tract boundaries in relationship to the portion bid upon. It shall also show the Topographic features (Land and Water) of the area in detail similar to the Official Plat contained herein. Failure to follow these guidelines in submitting a portion bid may result in outright rejection of the portion bid by the State Mineral Board as its sole discretion.

**Notice is given that the State Mineral Board will include provisions in the lease to insure applicable payments attributable to the lease property without regard to adverse title claims, disputes, litigation or title failure and the language of those provisions is available to any interested party at the Office of Mineral Resources. Prospective bidders should carefully examine the same prior to submitting any bid.**

Some tracts available for leasing may be situated in the Louisiana Coastal Zone as defined in Act 361 of the Regular Session of the Louisiana Legislature of 1976 (promulgated as LSA-R.S. 49:213) and may be subject to the guidelines and regulations promulgated by the Coastal Management Section of the Department of Natural Resources for operations in the Coastal Zone.

The descriptions of Tract Nos. **34806** through **34952 inclusive** will be published in Baton Rouge on **July 17, 2002** in "The Advocate", which is the Official Journal of the State of Louisiana and also in the Official Journal of the Parishes in which the property is located.

**NOTE: All bids shall specify the Cash Payment bonus for leases as a price per acre amount and an aggregate amount of the bonus to be paid to the State. An aggregate amount shall specify the full value of rental or deferred development payments to be made. If there are any discrepancies between the total State acreage specified in a lease and the actual State acreage within the geographical boundary of the lease, the actual State acreage shall prevail. The bid for the lease shall be multiplied by the appropriate State acreage within the geographical boundary of the lease tract to compute rental or deferred development payments.**

**NOTE:** Multiple portion bids on the same tract may be accepted by the State Mineral Board, even though they overlap. In the case of overlapping portion bids on the same tract, each of which is otherwise acceptable to the State, the State Mineral Board will indicate which one of the multiple bids on the same tract is most acceptable, considering the royalty, per acre cash payment, bonus, any additional consideration and what, in the sole discretion of the State Mineral Board, is in the best interest of the State, and that bid (referred to as "Bid A") will be given priority in having a lease issued. The State Mineral Board will also indicate the acceptability of other portion bids on the same tract, if any, in the order of their acceptance (referred to respectively as "Bid B," "Bid C," etc.). Once the plat of "Bid A" is portion has been rendered as accurately as possible, "Bid B" will be contacted and given an option to purchase the remaining portion of his portion bid acreage by matching "Bid A" bid price, less the per acre "Bid B" bid price (both as to bonus and rental); and thereafter, each successive bidder whose bid is otherwise acceptable will be given the option to take a lease on whatever portion remains of his portion bid acreage at his respective per acre bid price, less and except any prior portion bid acreage on which the successful bidder has opted to take a lease.

Typical college students must perform a juggling act, says LSU AgCenter family economics specialist Dr. Jeanette Tucker. They have tuition and book costs, living expenses, classes, studying, social activities, family life and a job.

"Balancing all these responsibilities, often with limited finances, can be very challenging," says the family economist, adding, "To find the money to do all of the things they want to do, students can use some budgeting magic to stretch the money they have." Tucker offers a number of steps to help students make it on the money they have.

One is to know what is important to you. Values influence how we spend money. You may choose to spend lots of money on clothes, but a friend may spend most of his money on a nice car.

Make a list of the things that are most important to you. The list may include items like hobbies, friends, church, fraternity or sorority, savings, housing or social activities. Divide the list into three groups: very important, somewhat important or not very important. Now compare your list with your checkbook or spending receipts. Are you spending your money for things that are really important?

Another step is to set money goals. Money goals are specific things you want to do with your money within a specific period of time. Goals vary in length. Short-term goals are the things you wish to accomplish in a week to a month. Examples might be a trip to an out-of-town football game or a special date.

Intermediate goals may be accomplished in six months to a year, such as a trip for spring break or buying furnishings for an apartment. Long-term goals are things that will take more than a year to accomplish, such as buying a new car or obtaining a graduate degree.

Write down your goals. Each goal should be specific, realistic, measurable and have a target deadline for completion. Then calculate the cost per month to reach each goal.

A third step is to know what is necessary and what is nice to have. Is everything you buy really necessary? Sometimes our spending is based on needs and sometimes on wants. Needs are those items necessary for daily living, while wants are the things we like to have. For example, if you live off campus, you need to get to class. If you live on a busline, you can fill your need by riding the bus, but you may want to own your own car.

How can you afford your goals, needs and wants? Tucker makes these recommendations:

First, know how much income you have. Total the amount of income you receive. Your money might come from parents, earnings from a job, cash gifts, scholarships, grants or student loans.

Second, keep a record of expenses. Most people who have money problems don't know where their money goes. The best way to find out where it goes is to track your spending. Keep a log of your monthly expenses. Use a pad to jot down what you spend, or use receipts and your checkbook records to find out where your money goes.

Third, make a spending plan. A spending plan is a guide for where and when you will spend your money. It can be divided into two kinds of expenses - fixed and flexible. Fixed expenses occur on a regular basis such as every week or month: rent, utilities, car payment. Flexible expenses can be changed up or down to fit your income: food, clothing, recreation.

Fourth, check your spending habits. If you aren't happy with how you are spending your money, change your behavior so that you are able to do the things you want to do. There are three ways to control spending: get rid of undesirable spending habits that give immediate satisfaction, establish desirable habits that may not immediately be as pleasing or satisfying and always keep your goals in mind.

Fifth, check your progress along the way. Evaluate your spending habits regularly. Ask yourself: "How well am I doing with my spending? Am I meeting my goals?" Maybe your goal was too ambitious or not ambitious enough. Adjust your plan so that you can live but still save.

Tucker recommends contacting an extension agent in your parish LSU AgCenter office to learn more about balancing income and expenses. In addition, refer to the Family and Consumer Sciences section under the Louisiana Cooperative Extension Service at the LSU AgCenter Web site: http://www.lsuagcenter.com/.

Classified ads should be submitted by 10 a.m. Tuesday of that week's paper. The cost is \$4.00 for the first 25 words, and 10¢ for each additional word.

Display ads should be submitted to the Cameron Pilot by 4 p.m. Tuesday for inclusion in that week's paper. Costs vary by size.

Digital pictures for publication should be submitted on floppy disk or via e-mail: dequincynews@centurytel.net. Please send original jpeg format without alteration.

**INLAND TRACTS (Tract Nos. 34835 through 34949 inclusive hereon)** are those tracts which lie landward of the shoreline as defined in the report of the Special Master in the Supreme Court of the United States styled *United States v. State of Louisiana*, et al., No. 9 Original and set out in the June 1975, Decree of the said Supreme Court. All bids on inland tracts cannot specify a lease primary term exceeding **three (3) years**. Bids that specify a primary term exceeding three (3) years for an inland tract may be rejected outright or the primary term changed to three (3) years at the sole discretion of the State Mineral Board.

**TRACT 34835 - Cameron Parish, Louisiana** - All of the lands now or formerly constituting the beds and bottoms of all water bodies of every nature and description, and all islands and other lands formed by accretion, where allowed by law, or by reliction, and excepting tax adjudicated lands, belonging to the State of Louisiana and not presently under mineral lease on September 11, 2002, situated in Cameron Parish, Louisiana, and more particularly described as follows: Beginning at a point having Coordinates of X = 1,518,170.00 and Y = 412,388.00; thence West 4,092.00 feet to a point having Coordinates of X = 1,514,078.00 and Y = 412,388.00; thence North 5,518.00 feet to a point having Coordinates of X = 1,514,078.00 and Y = 417,906.00; thence East 4,092.00 feet to a point having Coordinates of X = 1,518,170.00 and Y = 417,906.00; thence South 5,518.00 feet to the point of beginning. **LESS AND EXCEPT**, if any, that portion of State Lease No. 14806, as amended, that may lie within the above described tract, containing approximately **39 acres**, all as more particularly outlined on a plat on file in the Office of Mineral Resources, Department of Natural Resources, as provided by the applicant. All bearings, distances and coordinates are based on Louisiana Coordinate System of 1927, (North or South Zone), where applicable.

**NOTE:** The above description of the Tract nominated for lease has been provided and corrected, where required, exclusively by the nomination party. Any mineral lease selected from this Tract and awarded by the Louisiana State Mineral Board shall be without warranty of any kind, either express, implied, or statutory, including, but not limited to, the implied warranties of merchantability and fitness for a particular purpose. Should the mineral lease awarded by the Louisiana State Mineral Board be subsequently modified, cancelled or abrogated due to the existence of conflicting leases, operating agreements, private claims or other future obligations or conditions which may affect all or any portion of the leased Tract, it shall not relieve the Lessee of the obligation to pay any bonus due thereon to the Louisiana State Mineral Board, nor shall the Louisiana State Mineral Board be obligated to refund any consideration paid by the Lessor prior to such modification, cancellation, or abrogation, including, but not limited to, bonuses, rentals and royalties.

**NOTE:** The State of Louisiana does hereby reserve, and this lease shall be subject to, the inprescriptible right of surface use in the nature of a servitude in favor of the Department of Natural Resources, including its Offices and Commissions, for the sole purpose of implementing, constructing, servicing and maintaining approved coastal zone management and/or restoration projects. Utilization of any and all rights derived under this lease by the mineral lessee, its agents, successors or assigns, shall not interfere with nor hinder the reasonable surface use by the Department of Natural Resources, its Offices or Commissions, as herein above reserved.

**TRACT 34836 - Cameron Parish, Louisiana** - All of the lands now or formerly constituting the beds and bottoms of all water bodies of every nature and description, and all islands and other lands formed by accretion, where allowed by law, or by reliction, and excepting tax adjudicated lands, belonging to the State of Louisiana and not presently under mineral lease on September 11, 2002, situated in Cameron Parish, Louisiana, and more particularly described as follows: Beginning at a point having Coordinates of X = 1,518,170.00 and Y = 412,388.00; thence North 10,112.00 feet to a point having Coordinates of X = 1,518,170.00 and Y = 423,000.00; thence East 10,112.00 feet to a point having Coordinates of X = 1,528,880.00 and Y = 412,388.00; thence West 10,112.00 feet to the point of beginning. **LESS AND EXCEPT**, if any, that portion of State Lease No. 14806, as amended, that may lie within the above described tract, containing approximately **106 acres**, all as more particularly outlined on a plat on file in the Office of Mineral Resources, Department of Natural Resources, as provided by the applicant. All bearings, distances and coordinates are based on Louisiana Coordinate System of 1927, (North or South Zone), where applicable.

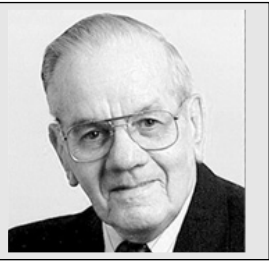
**NOTE:** The above description of the Tract nominated for lease has been provided and corrected, where required, exclusively by the nomination party. Any mineral lease selected from this Tract and awarded by the Louisiana State Mineral Board shall be without warranty of any kind, either express, implied, or statutory, including, but not limited to, the implied warranties of merchantability and fitness for a particular purpose. Should the mineral lease awarded by the Louisiana State Mineral Board be subsequently modified, cancelled or abrogated due to the existence of conflicting leases, operating agreements, private claims or other future obligations or conditions which may affect all or any portion of the leased Tract, it shall not relieve the Lessee of the obligation to pay any bonus due thereon to the Louisiana State Mineral Board, nor shall the Louisiana State Mineral Board be obligated to refund any consideration paid by the Lessor prior to such modification, cancellation, or abrogation, including, but not limited to, bonuses, rentals and royalties.

**NOTE:** The State of Louisiana does hereby reserve, and this lease shall be subject to, the inprescriptible right of surface use in the nature of a servitude in favor of the Department of Natural Resources, including its Offices and Commissions, for the sole purpose of implementing, constructing, servicing and maintaining approved coastal zone management and/or restoration projects. Utilization of any and all rights derived under this lease by the mineral lessee, its agents, successors or assigns, shall not interfere with nor hinder the reasonable surface use by the Department of Natural Resources, its Offices or Commissions, as herein above reserved.

**TRACT 34837 - Cameron Parish, Louisiana** - All of the lands now or formerly constituting the beds and bottoms of all water bodies of every nature and description, and all islands and other lands formed by accretion, where allowed by law, or by reliction, and excepting tax adjudicated lands, belonging to the State of Louisiana and not presently under mineral lease on September 11, 2002, situated in Cameron Parish, Louisiana, and more particularly described as follows: Beginning at a point having Coordinates of X = 1,524,892.00 and Y = 412,388.00; thence South 2,211.71 feet to a point having Coordinates of X = 1,524,892.00 and Y = 419,600.00; thence West 1,852.52 feet to the Northeast corner of State Lease No. 14501, as amended, having Coordinates of X = 1,523,039.48 and Y = 410,176.29; thence North 88 degrees 36 minutes 00 seconds West 3,240.45 feet along the North line of said State Lease No. 14501 to its Northwest corner, also being the Northeast corner of State Lease No. 14806, as amended, having Coordinates of X = 1,519,800.00 and Y = 410,255.46; thence North 88 degrees 36 minutes

## Memories of Remagen

By W. T. BLOCK, JR.



By W. T. Block

I have seen the film "The Bridge At Remagen" 4 or 5 times; I have even copied it onto tape because the bridge capture was probably the highlight of my military career. I crossed the bridge the first time in a vehicle on the day it was captured (Mar. 7, 1945), and twice on foot the following day.

For the two or more generations of Americans born since World War II, the capture of the Ludendorff rail bridge over the Rhine River at Remagen, Germany was certainly not as significant as the dropping of the atom bombs on Japan; but it nevertheless saved a few thousand lives and shortened the war in Europe. The double rail bridge had been left open to evacuate as many German units as possible, and without a doubt the rapid advance of American troops surprised the Germans. At the last moment their attempt to blow up the bridge failed; hence its capture by the U. S. 9th Armored Division.

I remember, too, about 1969 while I was taking a senior history course at Lamar University, entitled "Contemporary America," from Dr. Paul Isaac. He said he would take time to explain the bridge's capture because it probably had shortened the war in Europe by 3 months.

At the end I held up my hand and told the class that I had crossed the bridge 3 times on the first 2 days of its capture. Dr. Isaac laughed his inimitable laugh for about 2 minutes; and at the end he said it was his first time to try to teach history to someone who had made it.

Prior to March 7th, my 78th Division had endured the horrors of the Battle of the Bulge, followed by the capture of the German Rhineland. At the end of the latter, we had been promised a rest, a bath and some clean clothes. Instead when our convoy reached the apex of the hilly escarpment on the west bank of the Rhine, we could already see the bridge 5 miles away, and discern through binoculars that the endless stream of vehicles crossing the bridge were American. We immediately knew that our promise of rest, baths, and new

clothes had been nullified.

Upon crossing the bridge, we brought our remotely-controlled radio into the cellar of a huge stone building, 2 blocks north of the bridge and adjacent to the river.

The building also housed 2nd Battalion HQ, our 309th regimental HQ, and the 78th Division forward echelon and division artillery headquarters, causing a constant stream of field grade and general officers to be billeted with us.

For the next 10 days, or until the bridge fell into the water on Mar. 17th, we witnessed the incessant staccato of 2,000 anti-aircraft machine guns and 100 Bofors anti-aircraft cannons defending the bridge. I watched as about 110 German planes, including many jets trying to bomb the bridge, were shot down, and I saw at least 6 German pilots parachute into the Rhine River and disappear under water. One day a spent machine gun bullet killed a regimental major standing beside me.

On March 8th, I had to deliver a message to the west side of the river, which meant a round-trip across the bridge on foot. However, I ran in both directions across that bridge, jumping at intervals over several bodies, as fast as 2 legs could carry me.

The Remagen bridge was the scene of 4 "firsts" in military history - the first use of "pattern" anti-aircraft fire to defend a target; the first use of jet aircraft in combat; and the first underwater pontoon bridge ever built.

The Remagen Bridgehead was a blood bath for the 78th Division, mostly from German artillery, and from German tanks, although stalled for lack of gasoline, whose guns were close enough to be very effective. About Mar. 25th, my division invaded the south side of the Ruhr Pocket. On April 14th we met the invading British division coming in from the north, and we had captured 100,000 prisoners during those 3 weeks.

In Mar. 2001, about 500 old American and German veterans met at Remagen to dedicate a monument and converse about the war. I had an invitation from Germany to attend, but declined.

## Children's breakfast is a must

Three million American children go to school each day without breakfast. They automatically start their day behind the other children, according to LSU AgCenter nutritionist Dr. Beth Reames.

The rush to school and work each day means some things have to be sacrificed, and often that includes breakfast. A recent survey found as many as 30 percent of 8- to 13-year-old children do not eat breakfast every day. Since 1965 the percentage of children who eat breakfast has declined. More than one-third of adolescent girls don't eat breakfast.

Reames says eating breakfast improves concentration, problem-solving ability, mental performance, memory and mood. With breakfast, students think faster and clearer and have better recall. Breakfast eaters also score higher on tests and have better concentration and muscle coordination.

Studies of children ages 9 to 11 found that those eating a breakfast of waffles, orange juice and milk performed better on picture identification and matching tests than children who skipped breakfast.

Children who eat breakfast also are less likely to miss class, be tardy or report they are sick than children who miss the morning meal.

Reames says teachers shouldn't forget breakfast either. Breakfast provides grown-ups with the energy and nutrients needed to start the day. "It's important for parents to eat a good breakfast every day, since they are role models for their children," the nutritionist says, adding, "Children who see their parents eat breakfast are more likely to eat breakfast, too."

If you skip breakfast, your body has gone many hours with nothing in your system. Getting the 40-plus nutrients needed each day is more likely for those who eat a morning meal. Breakfast skippers may never make up the nutrients they miss. Breakfast should provide children with about a quarter of their daily calories. Children who skip breakfast may not get as much protein, carbohydrates, calcium, iron and vitamin C each day as children who eat breakfast.

Reames says breakfast provides glucose - the fuel you need to think, walk, talk and carry on all activities, since your brain and central nervous system run on glucose. Without breakfast, you deprive your brain of nutrients, and your body has to work extra hard to break down any stored carbohydrate, or it has to turn fat or protein into a usable form for your brain to function. You'll begin to feel the effects when you're sitting in a classroom, trying to concentrate on reading or doing any other work.

Some people believe that skipping breakfast may help them lose weight. Skipping meals, however, often leads to overeating later in the day, Reames says, explaining that becoming over-hungry often leads to a lack of control and the inability to determine when you're full. This can result in taking in more calories than if you had an appropriate breakfast.

Reames says a school breakfast is the best option to provide a balanced meal every school morning. School breakfasts provide a balance of nutrients, including carbohydrate, protein and fat. A balanced breakfast such as fruit, cereal and low-fat milk gives a sustained release of energy, which delays symptoms of hunger for several hours.

The nutritionist says if there's no time in the morning to eat breakfast, there are plenty of items you can bring along with you to school or work. For example, she says to carry a resealable bag of easy-to-eat whole-grain cereal or bring yogurt or a small box of skim milk, juice or fruit.

Even if you just tolerate food in the morning, try to have a little something - such as some juice - and bring along a mid-morning snack. Other good portable items include whole-grain crackers, a hard-boiled egg, cottage cheese, low-fat granola bars or even a peanut butter sandwich.

Single serving hot cereals, such as oatmeal, also are handy, since all you have to do is add hot water, which is available at most cafeterias or at the office.

"Try to start your morning with some fuel in your system," Reames says, emphasizing, "This can pay big dividends in increasing your performance."

homework is punishment.

Make sure your child gets plenty of rest each night, especially before a test. Keep up the good habits you established at the toddler stage, like a regular bedtime and those bedtime routines.

Studies have shown that children who have a healthy, vitamin-packed breakfast do better in school. You can also spend breakfast time talking to your child positively about school, saying what a great day lies ahead learning and exploring.



A SHRIMP BOAT is shown tied up at a dock on the Mermentau River at Grand Chenier. Shrimping is one of Cameron Parish's principal industries.

## Nutritious snacks can be tasty, too

When the kids come home from school, most head to the refrigerator or pantry for a snack. LSU AgCenter nutritionist Dr. Beth Reames says to help your child be snack-wise with healthy food choices from the Food Guide Pyramid.

Snacks can be an important part of a child's diet. The nutritionist says children may need to eat more than three times a day, because they are active and growing. Snacks help furnish the necessary food and also offer a wonderful chance to give children new and different foods.

Reames says to prepare for snack attacks, stock up on simple foods: peanut butter; cheese spread or slices; whole-grain crackers; small bagels and pita bread; non-sugar coated, ready-to-eat cereals; vegetables and fruits. Keep these on hand for quick assembly of after-school snacks.

The nutritionist says to try different kinds of snacks from the various food groups in the Food Guide Pyramid.

Bread, Cereal, Rice and Pasta Group. Grain foods are the foundation for healthful eating. They supply carbohydrates, some B-vitamins, iron and fiber.

Here are some snack options:

- Cracker stacks - wheat crackers spread with cheese spread.
- Ready-to-eat cereals.
- Flavored mini rice cakes or popcorn cakes.
- Breads of all kinds, such as multi-grain, rye, white, wheat.
- Ginger snaps or fig bars.
- Popcorn.
- Trail mix, or dry cereals mixed with raisins or other dried fruit.
- Graham crackers.

- Vegetable Group. Veggies supply beta-carotene, folate, vitamin C, carbohydrates, fiber and water. Here are some snack possibilities:
- Vegetable sticks, such as carrot, celery, green pepper, cucumber or squash.
- Celery stuffed with peanut butter.
- Cherry tomatoes cut in small pieces.
- Steamed broccoli, green beans or sugar peas with low-fat dip.
- Fruit Group. Fruits provide beta-carotene, folate, vitamin C, carbohydrates, fiber and water. Try these snacks:

- Apple ring sandwiches-peanut butter on apple rings.
- Tangerine sections.
- Chunks of banana or pineapple.
- Canned fruits packed in juice.
- Juice box (100 percent juice).
- Milk Group. Milk is a rich source of calcium for strong bones and teeth. Here are some snacks from this group:
- Milk shakes - made with fruit and milk.
- Cheese slices with thin apple wedges.
- String cheese or individually wrapped slices.
- Plain or fruited yogurt.
- Meat, Poultry, Fish, Dry Beans, Eggs and Nuts Group. Here are snacks that this group has to offer:
- Hard-cooked eggs (wedges or slices).
- Peanut butter spread thinly on crackers.
- Bean dip spread thinly on crackers.
- Reames offers snacking strategies to keep children healthy and well nourished. She says to encourage children to plan simple snacks, such as crackers and cheese or dried fruit and bite sized whole wheat crackers packed in a bag.

- Apple ring sandwiches-peanut butter on apple rings.
- Tangerine sections.
- Chunks of banana or pineapple.
- Canned fruits packed in juice.
- Juice box (100 percent juice).
- Milk Group. Milk is a rich source of calcium for strong bones and teeth. Here are some snacks from this group:
- Milk shakes - made with fruit and milk.
- Cheese slices with thin apple wedges.
- String cheese or individually wrapped slices.
- Plain or fruited yogurt.
- Meat, Poultry, Fish, Dry Beans, Eggs and Nuts Group. Here are snacks that this group has to offer:
- Hard-cooked eggs (wedges or slices).
- Peanut butter spread thinly on crackers.
- Bean dip spread thinly on crackers.
- Reames offers snacking strategies to keep children healthy and well nourished. She says to encourage children to plan simple snacks, such as crackers and cheese or dried fruit and bite sized whole wheat crackers packed in a bag.

- Apple ring sandwiches-peanut butter on apple rings.
- Tangerine sections.
- Chunks of banana or pineapple.
- Canned fruits packed in juice.
- Juice box (100 percent juice).
- Milk Group. Milk is a rich source of calcium for strong bones and teeth. Here are some snacks from this group:
- Milk shakes - made with fruit and milk.
- Cheese slices with thin apple wedges.
- String cheese or individually wrapped slices.
- Plain or fruited yogurt.
- Meat, Poultry, Fish, Dry Beans, Eggs and Nuts Group. Here are snacks that this group has to offer:
- Hard-cooked eggs (wedges or slices).
- Peanut butter spread thinly on crackers.
- Bean dip spread thinly on crackers.
- Reames offers snacking strategies to keep children healthy and well nourished. She says to encourage children to plan simple snacks, such as crackers and cheese or dried fruit and bite sized whole wheat crackers packed in a bag.

- Apple ring sandwiches-peanut butter on apple rings.
- Tangerine sections.
- Chunks of banana or pineapple.
- Canned fruits packed in juice.
- Juice box (100 percent juice).
- Milk Group. Milk is a rich source of calcium for strong bones and teeth. Here are some snacks from this group:
- Milk shakes - made with fruit and milk.
- Cheese slices with thin apple wedges.
- String cheese or individually wrapped slices.
- Plain or fruited yogurt.
- Meat, Poultry, Fish, Dry Beans, Eggs and Nuts Group. Here are snacks that this group has to offer:
- Hard-cooked eggs (wedges or slices).
- Peanut butter spread thinly on crackers.
- Bean dip spread thinly on crackers.
- Reames offers snacking strategies to keep children healthy and well nourished. She says to encourage children to plan simple snacks, such as crackers and cheese or dried fruit and bite sized whole wheat crackers packed in a bag.

- Apple ring sandwiches-peanut butter on apple rings.
- Tangerine sections.
- Chunks of banana or pineapple.
- Canned fruits packed in juice.
- Juice box (100 percent juice).
- Milk Group. Milk is a rich source of calcium for strong bones and teeth. Here are some snacks from this group:
- Milk shakes - made with fruit and milk.
- Cheese slices with thin apple wedges.
- String cheese or individually wrapped slices.
- Plain or fruited yogurt.
- Meat, Poultry, Fish, Dry Beans, Eggs and Nuts Group. Here are snacks that this group has to offer:
- Hard-cooked eggs (wedges or slices).
- Peanut butter spread thinly on crackers.
- Bean dip spread thinly on crackers.
- Reames offers snacking strategies to keep children healthy and well nourished. She says to encourage children to plan simple snacks, such as crackers and cheese or dried fruit and bite sized whole wheat crackers packed in a bag.

## Saving Elmer's Island beach Federation's goal

In the best of times, Louisiana surf fishermen don't have many options on beaches that they can drive a vehicle to. Such beaches were limited to Fourchon Beach, Elmer's Island, and approximately 26 miles of beach between Rutherford Beach and Sabine Pass in Cameron Parish. On Grand Isle, vehicles can be taken to parking areas near the beach, but not onto the beach itself.

Now, much of that has been lost to public access. First Fourchon beach to the east of the "Fourchon Road" was closed to vehicles by private landowners. Then last year, Jay Elmer, the owner of Elmer's Island died in a vehicle accident. This year, Elmer's Island is closed and marked "for sale."

Recognizing the interest in public access to beaches, the Louisiana Wildlife Federation (LWF) passed a resolution at its annual meeting in March urging public purchase of Elmer's Island. Besides fishing, the island was heavily used for semi-primitive camping, and for recreational crabbing, swimming, and wildlife-watching.

LWF executive director Randy Lantot says the Federation has received a great deal of moral support for the idea, from the governor on down, but no other commitment. He says two things are needed, money for the \$6 million asking price and a public management agency to manage the area. Several agencies have been discussed, including the

## Energy aid is offered here

The Cameron Community Action Agency is still accepting applications of the Low-Income Home Energy Assistance Program.

Applications are being taken by appointment Monday - Friday, 8 a.m. - 12 p.m. and 1 - 3 p.m. at the Cameron Community Action Agency offices which are located in Cameron at 723 Marshall Street and in Grand Lake at 951 Hwy. 384. Call 775-5145 in Cameron and 598-5158 in Grand Lake to make an appointment.

Department of Wildlife and Fisheries, the Office of State Parks, and the Lafourche Parish Parks and Recreation Board, but no agency has stepped forward yet.

LWF's objective is not only to preserve the public access to the beach, but to preserve the unique saltwater marshes and dunes associated with the beach for wildlife habitat. The entire property totals about 1,700 acres. Individuals interested in more information or in working with the Wildlife Federation on the issue may contact Lantot at 225-344-6707 or LAWildFed@aol.com

## Encourage Success in School

You're a teacher, too! Education does not take place just at school. "A child does best when his parents reinforce at home what he is learning at school," says LSU AgCenter family life specialist Dr. Diane D. Sasser.

The family specialist recommends reading to your child each night and letting the teacher know you are doing this. Ask the teacher to suggest books you could read to your child.

Sit down with your child each day after school and ask how the day went. Make sure you read any and all information the teacher sends home.

You can encourage the conversation by looking over schoolwork and asking open-ended questions like, "What was the most favorite thing you did today?" "What was the best thing that happened today?" "What did you not like?"

As you look through the work and papers your child brings home from school, don't pick out just the low grades to examine. Look for the successes, too, and praise the good work. If there is a low grade in the stack, gently ask about the paper and try to find out if something wasn't understood. Some extra help may be needed in that area.

When it is time to do homework, encourage your child by turning off the television and making it quiet time at home. Everyone at home can "study." Read a book, pay bills, write a letter. This way your child will not feel as though

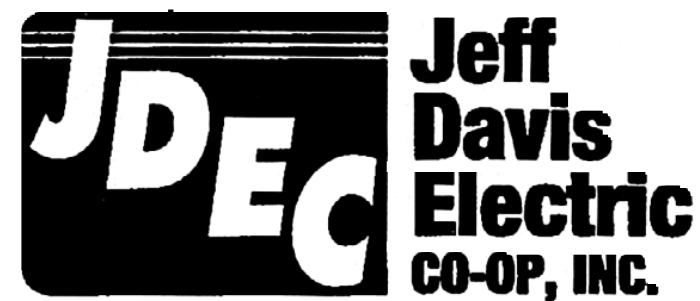
## A NOTE OF THANKS TO OUR MEMBERS

FROM

### JEFFERSON DAVIS ELECTRIC COOPERATIVE, INC.

Jefferson Davis Electric Cooperative, Inc. would like to express our sincere thanks to our members in the Johnson Bayou and Holly Beach areas for their patience and understanding during the power outages experienced on July 12th, 13th, 14th, and 15th. JDEC experienced major damage to the substation transformer during the lightning storm on the evening of July 12th. Through the innovation and hard work of our employees and the cooperation of the members in the Johnson Bayou area, JDEC was able to continue to supply power to all members until the transformer was replaced on July 15th. Jeff Davis Electric Cooperative apologizes for any inconvenience this may have caused you and we thank you for the support of your electric cooperative.

We take pride in providing a continuous source of power to the Homes, Businesses and Industrial Facilities of Cameron Parish.



*We're connected to You.*

OFFICE HOURS: 8 a.m. - 4:30 p.m., Mon. - Fri.

837 Marshall St.

Cameron, La.

— 24 HOUR SERVICE DEPARTMENT —

337-775-5332 or 1-800-256-5332